

Diavik Waste Rock Project: Hydrologic Observations from a Tracer Test and Test Pile Deconstruction

J. Zak and L. Smith (UBC), D. Blowes (U. Waterloo), R. Amos (Carleton U.), and D. Seago (U. Alberta)

Jordan Zak
University of British Columbia
Dec 2, 2015
MEND ML/ARD Workshop

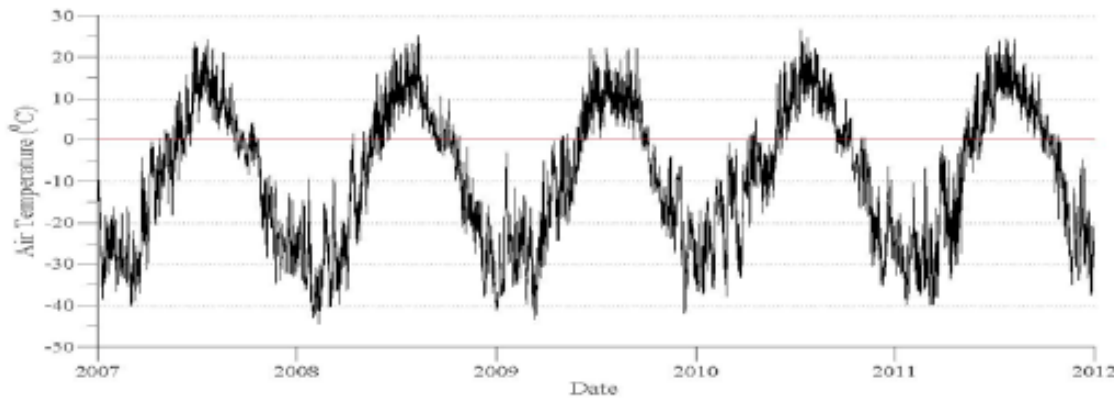
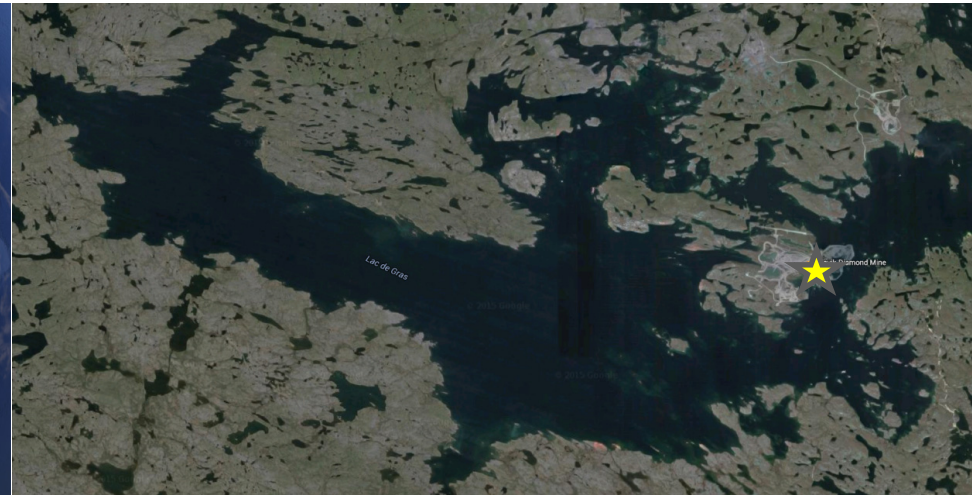
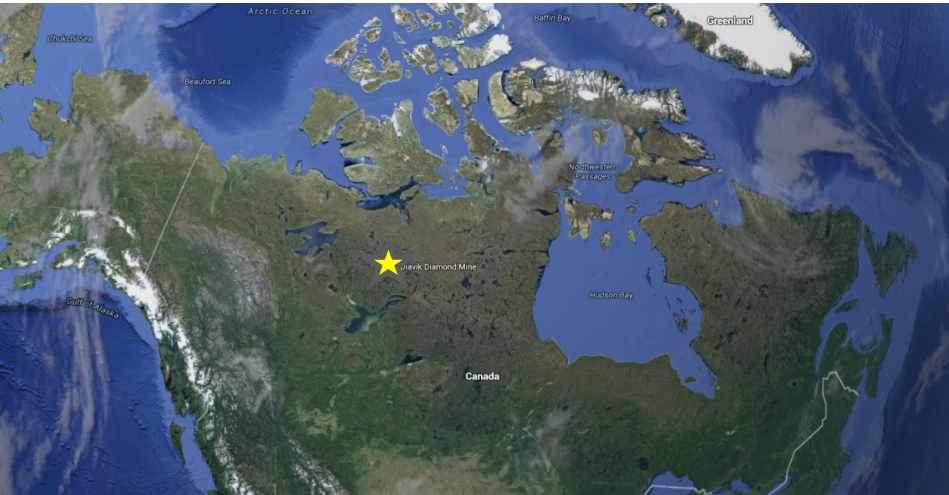
Objectives

Research Group: Gain a comprehensive understanding of the geochemical, hydrologic, thermal, gas transport, and microbial evolution of waste rock at the Diavik Diamond Mine

Presentation:

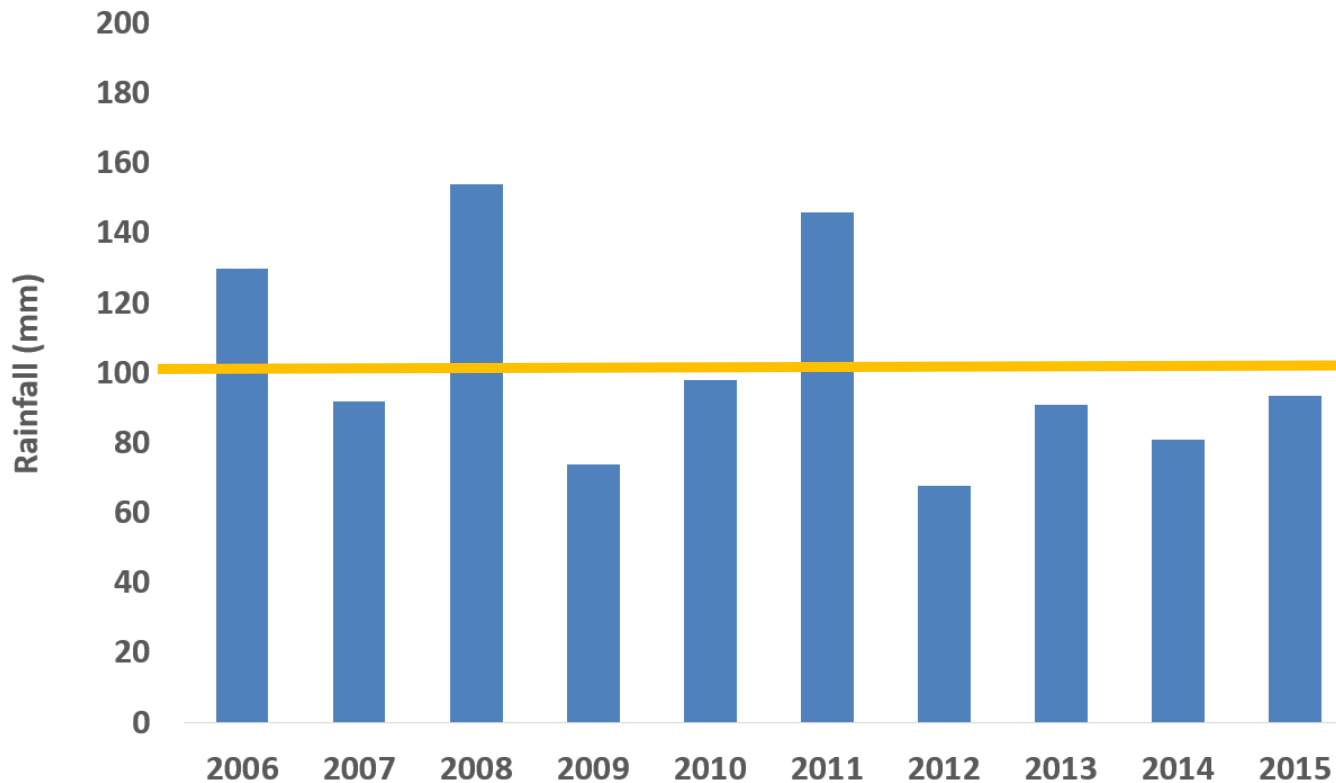
1. Quantify wet-up time, pore water velocity, and residence time within a 14 m tall uncovered waste rock test pile based on in-situ instrumentation and a nine year tracer test
2. Comparison of in-situ vs volumetric moisture contents mapped during the deconstruction of a test pile
3. Characterization of ice distribution in a test pile compared with observations from the full scale waste rock dump at Diavik

Site Description: Location



Zone of continuous permafrost
MAAT ~ -9°C

Site Description: Rainfall

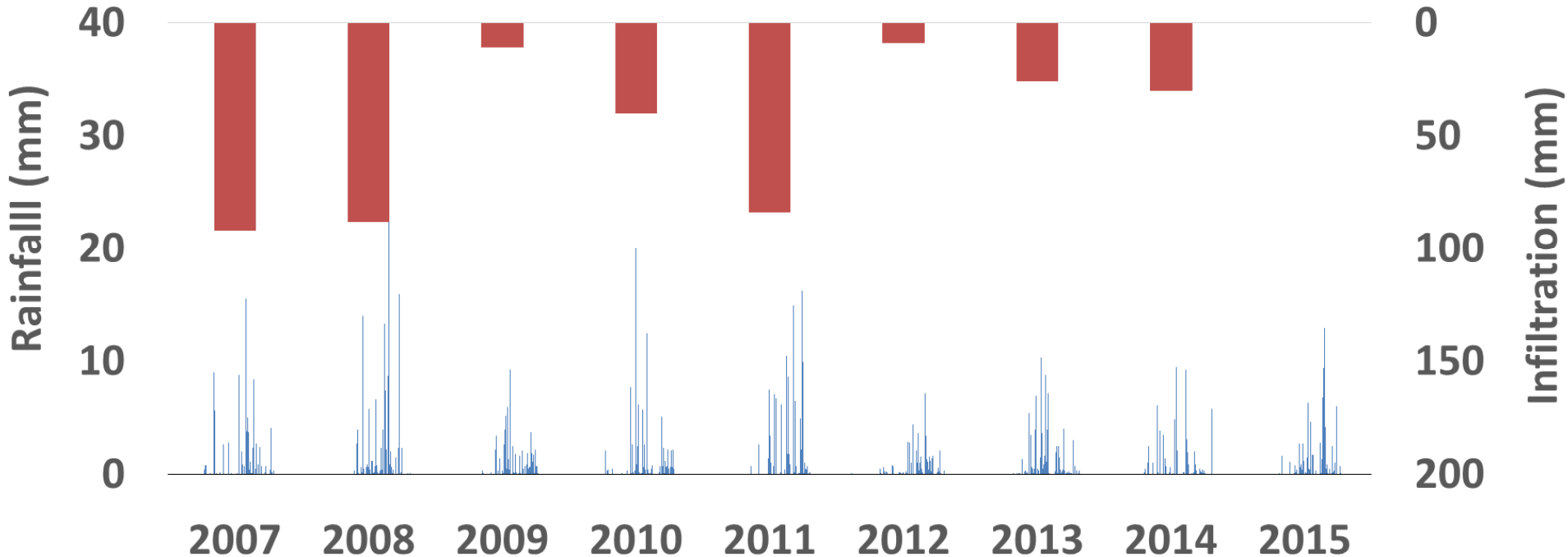


Average Rainfall over project 103 mm/yr

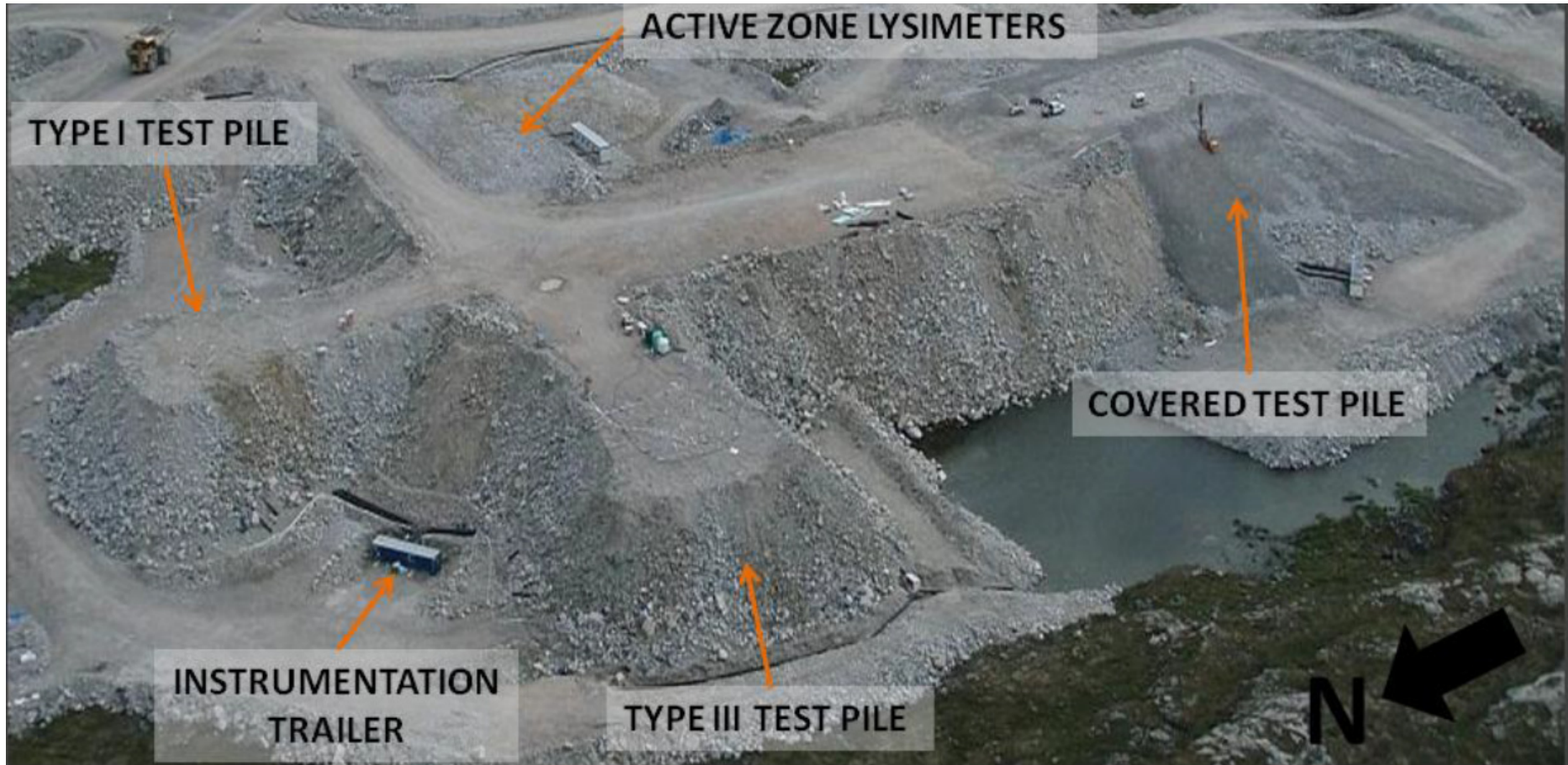
Current four year dry cycle approx. 83 mm/yr

Site Description: Rainfall

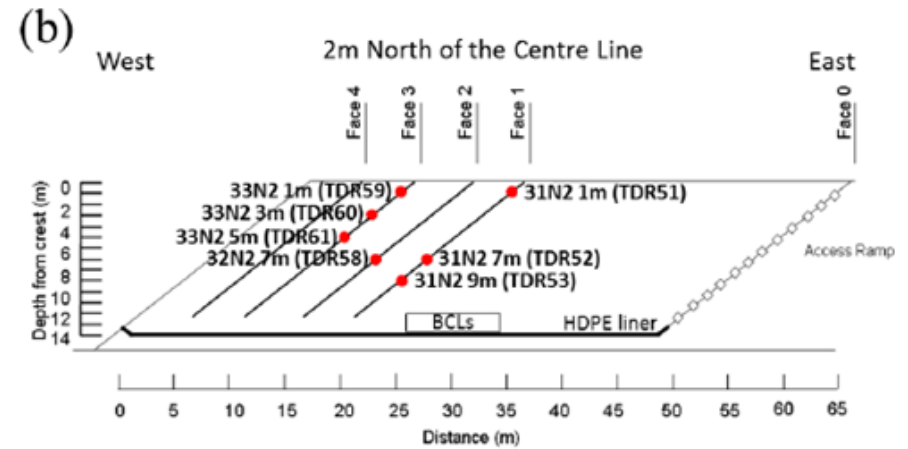
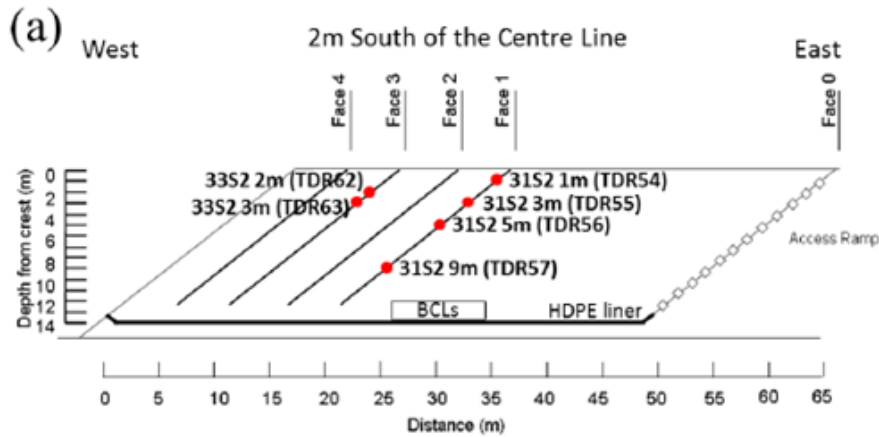
Daily Rainfall Events at Diavik and Infiltration Estimates



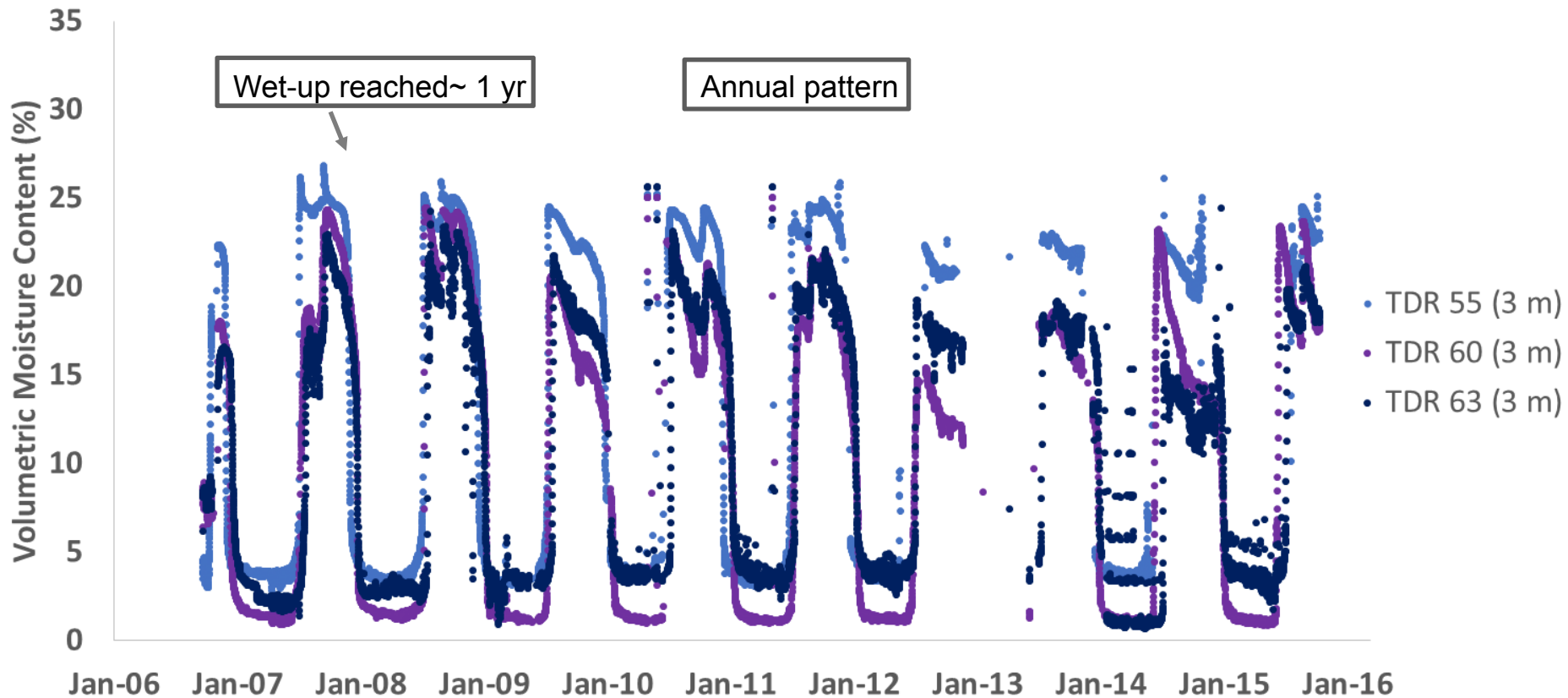
Test Piles



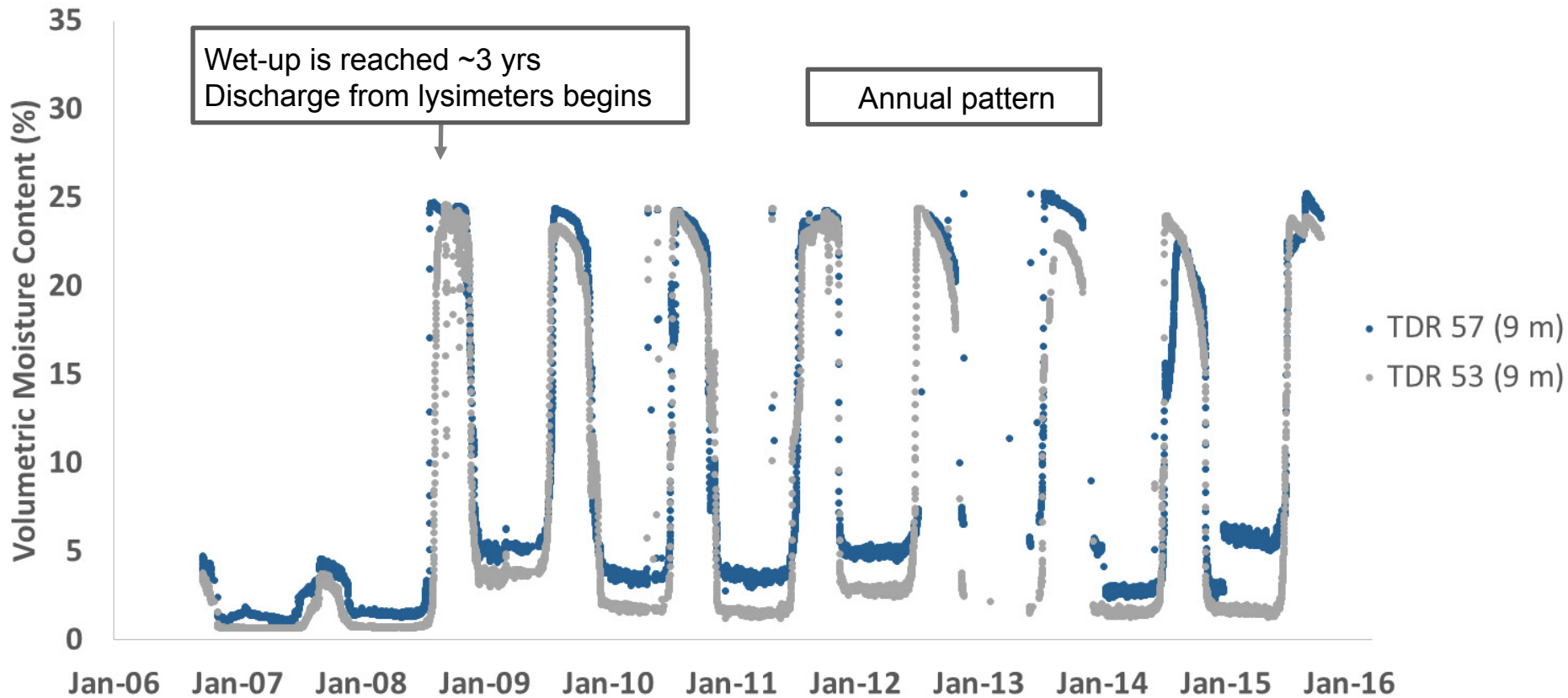
Type III Pile: TDR Locations



Type III Pile: Volumetric Moisture Content - 3 m Depth



Type III Pile: Volumetric Moisture Content - 9 m Depth

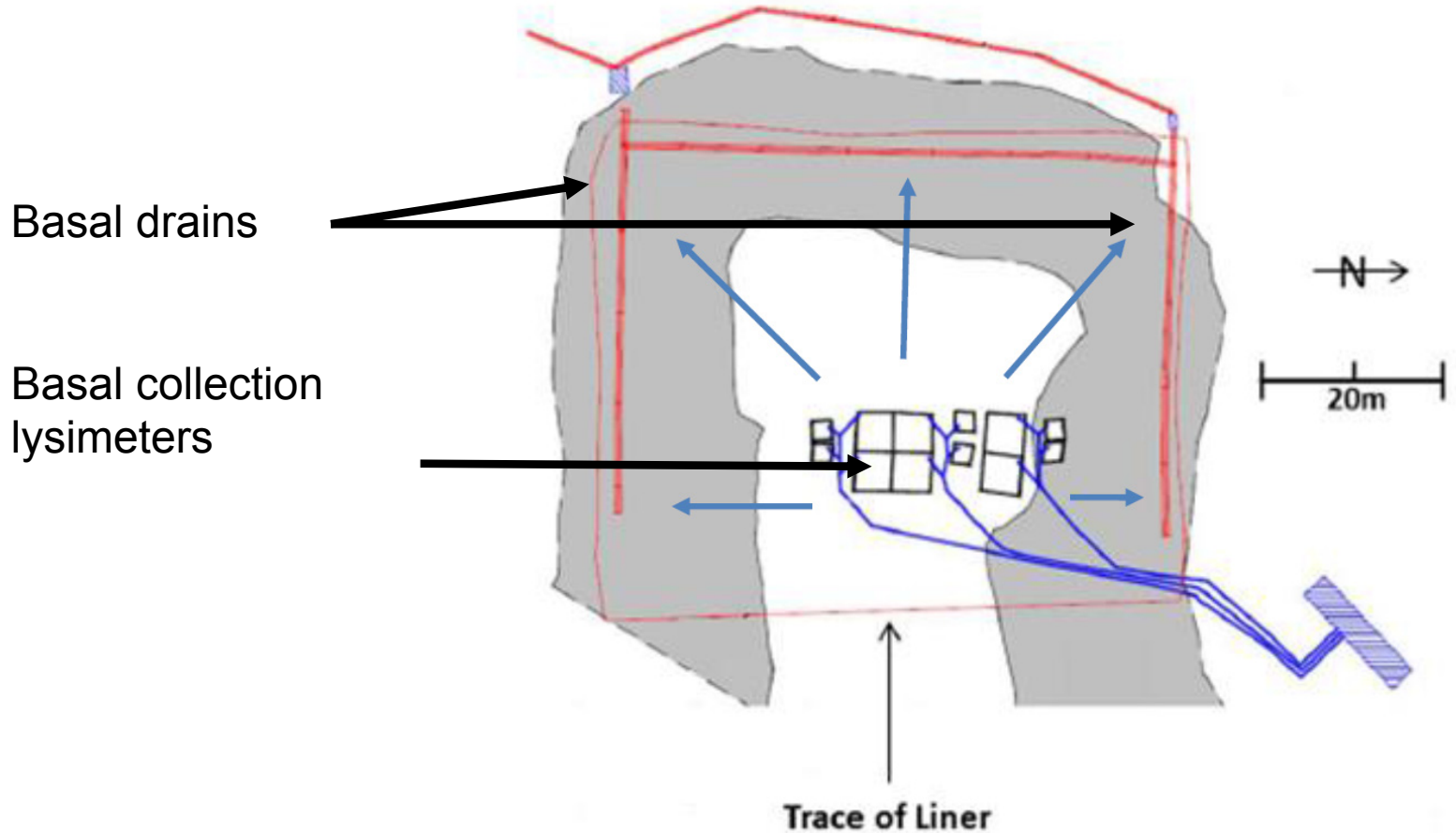


Type III Pile: Bromide Tracer Test

- **Goal:** quantify flow velocities and residence times for pore water in the core of the pile
- **Method:**
 - Bromide tracer applied to the crest
 - 29 mm event at 7.8 mm/hr
 - Observed using SWSS in the upper 9m of the pile
 - Recovery of the tracer through basal drains and BCLs

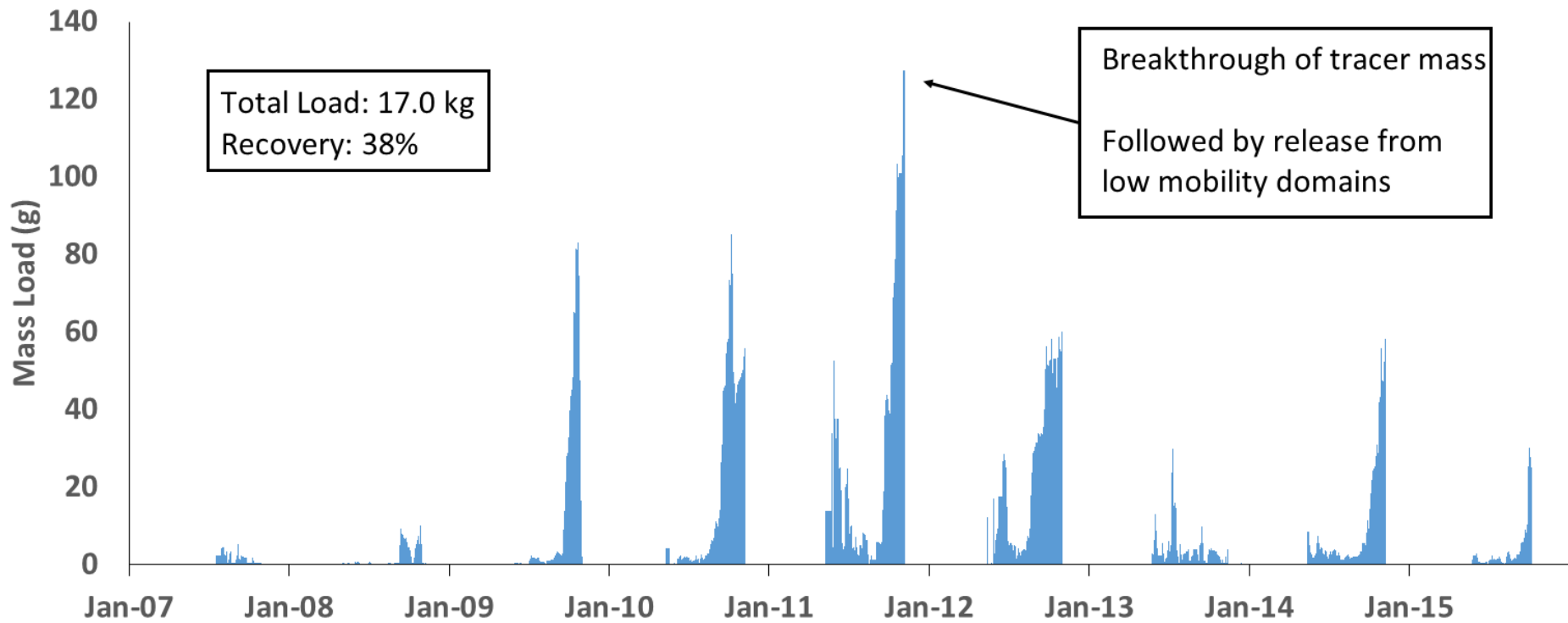


Type III Pile: Bromide Tracer Test



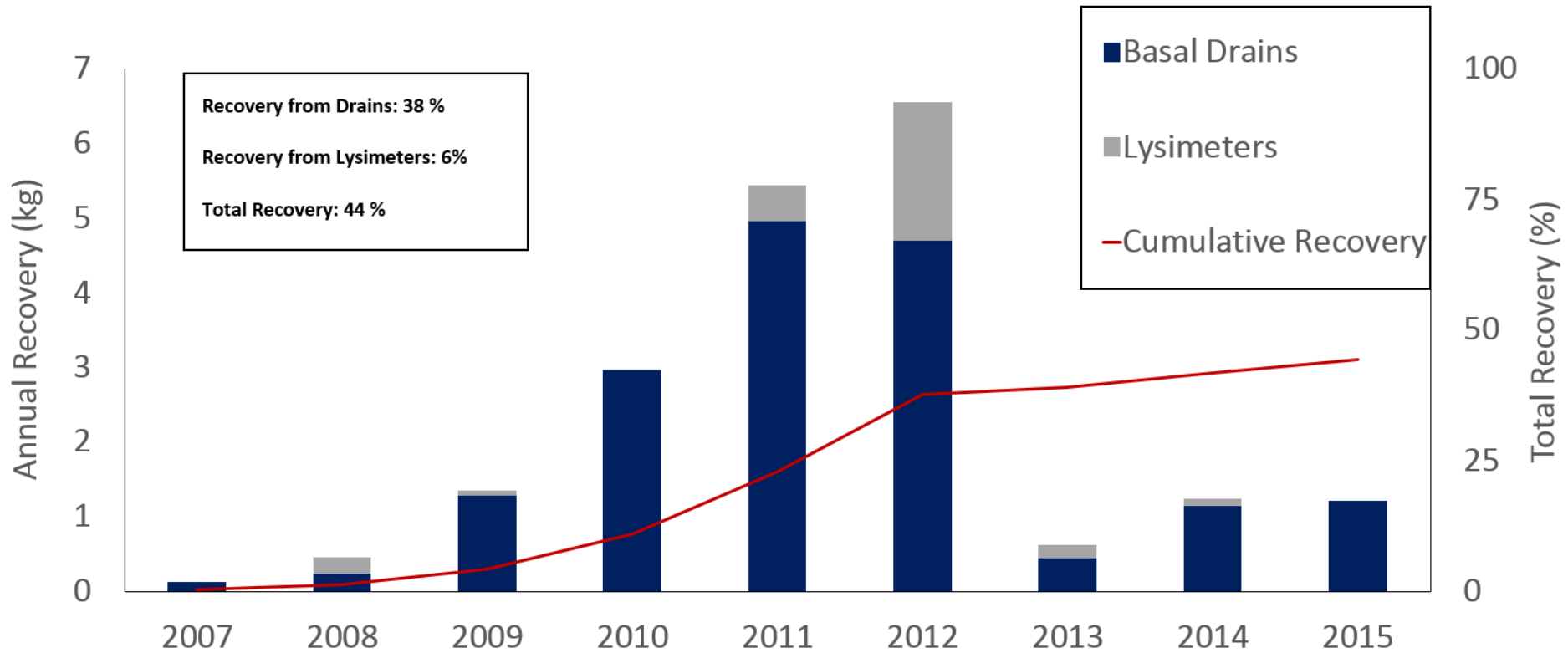
Type III Pile: Bromide Tracer Test

Type III Pile: Daily Bromide Load from Basal Drains



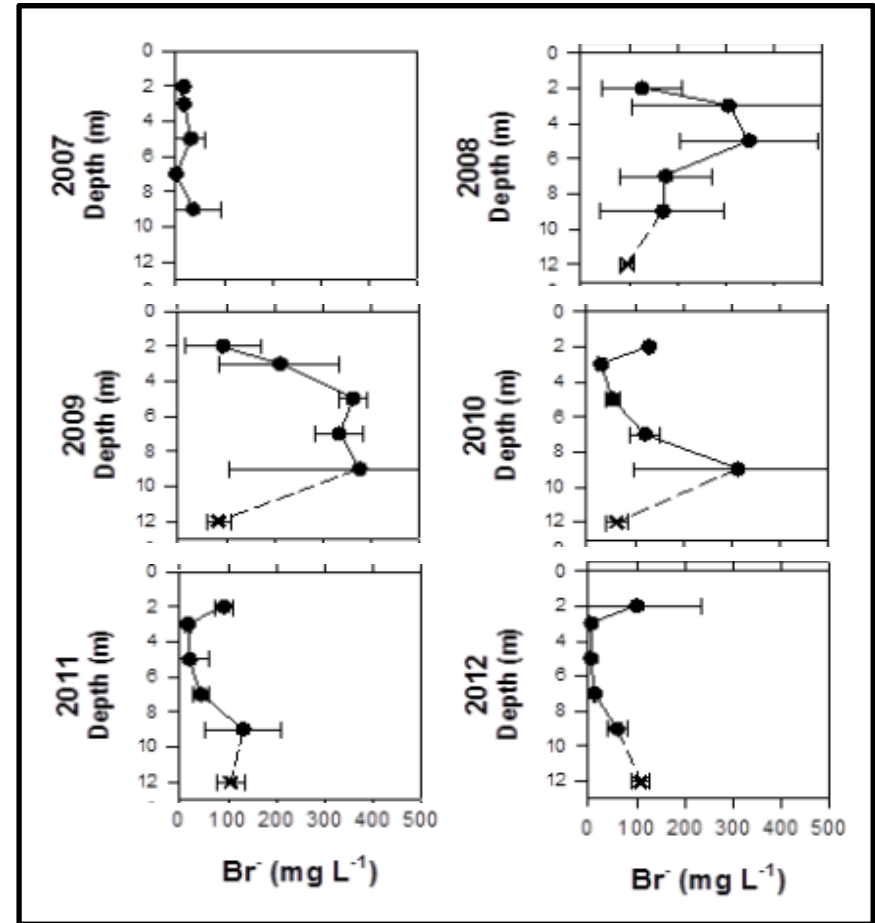
Type III Pile: Bromide Tracer Test

Recovery of Bromide Tracer



Type III Pile: Bromide Tracer Test

- SWSS data show downward migration of tracer mass through test pile
- SWSS indicate preferential flow up to 0.7 m/day at time of tracer application
- SWSS show pore water moves 2.3-2.9 m/yr
- **Velocity:** 1-2 cm/day when thawed (May-Nov) based on TDR, thermal measurements, and SWSS samples
- **Transit time:** ~ 2.3 years based on peak of mass recovery from basal drains, and considering only months when internal temperatures greater than zero



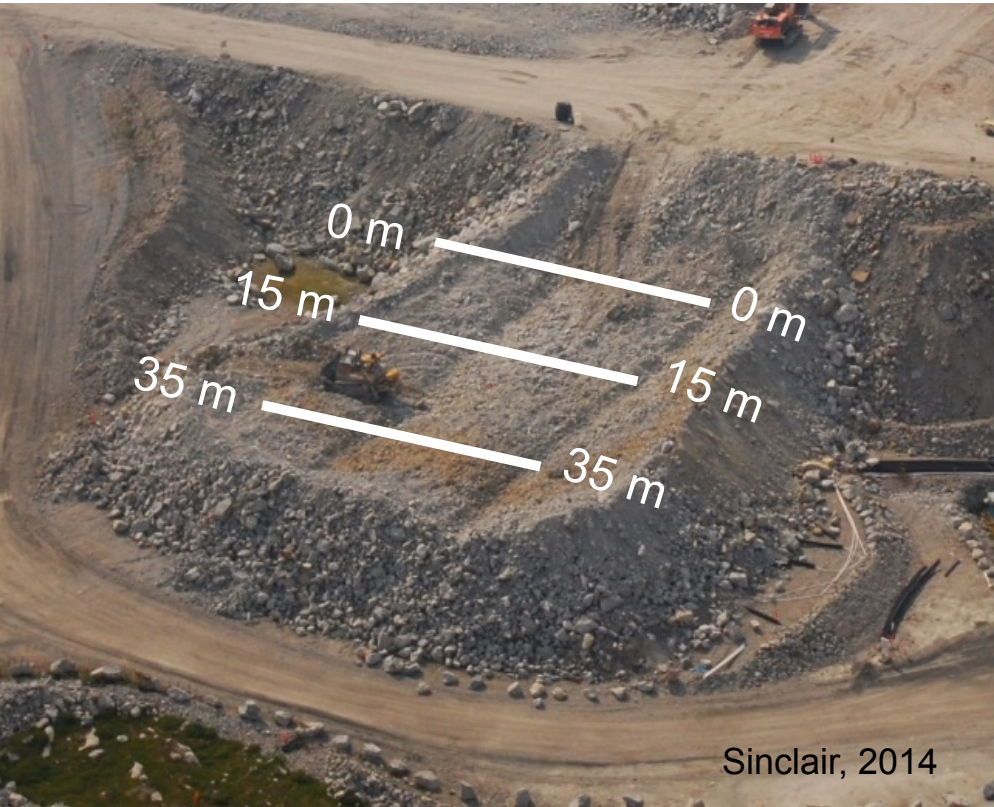
Sinclair, 2015



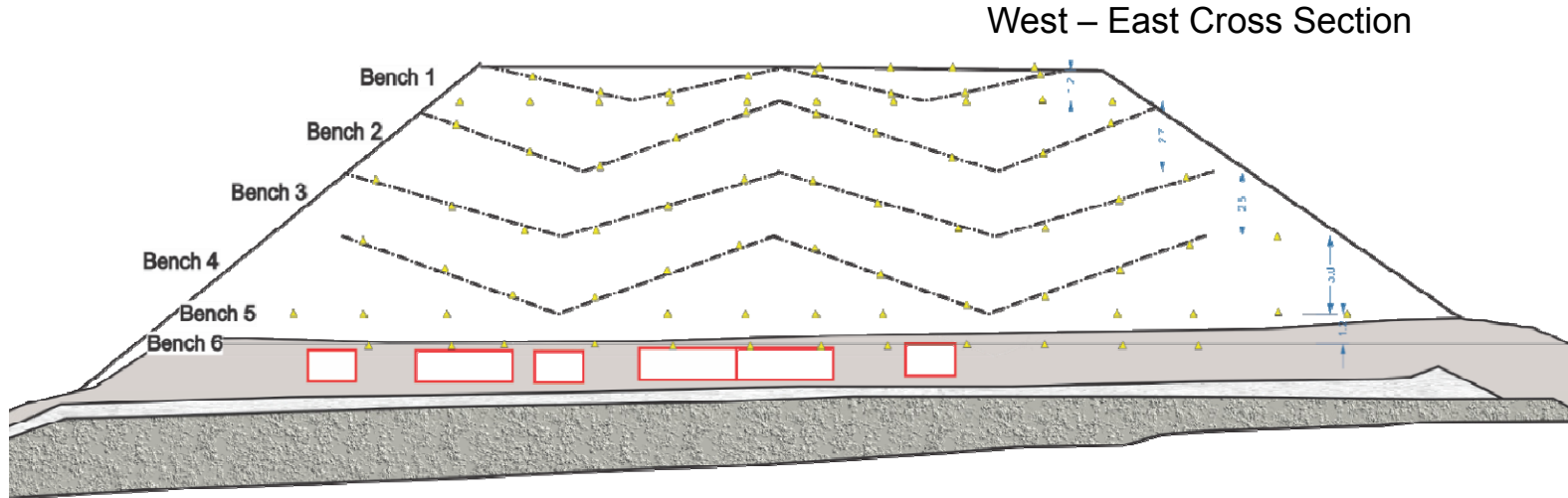
Type III Pile: Tracer Mass Remaining

- After nine years: Where is the remaining 56% of the tracer?
 - Low velocity flow paths / zones
 - Observed in 2 m SWSS
- Current work underway of understanding the role of ice formation influencing recovery of tracer

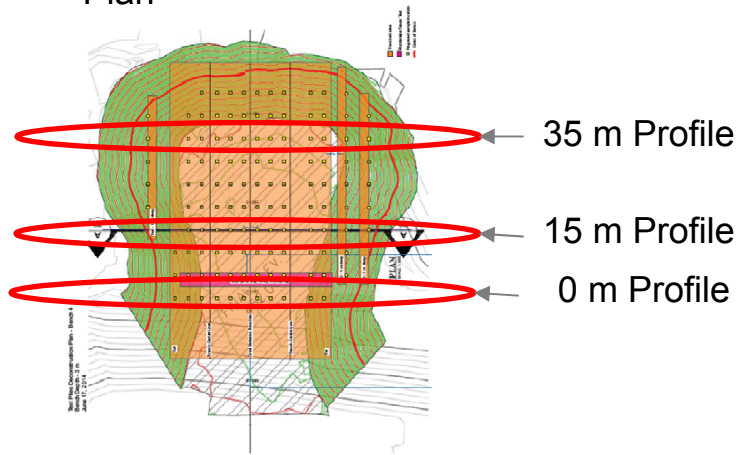
Type I Pile: Deconstruction



Type I Pile: Deconstruction

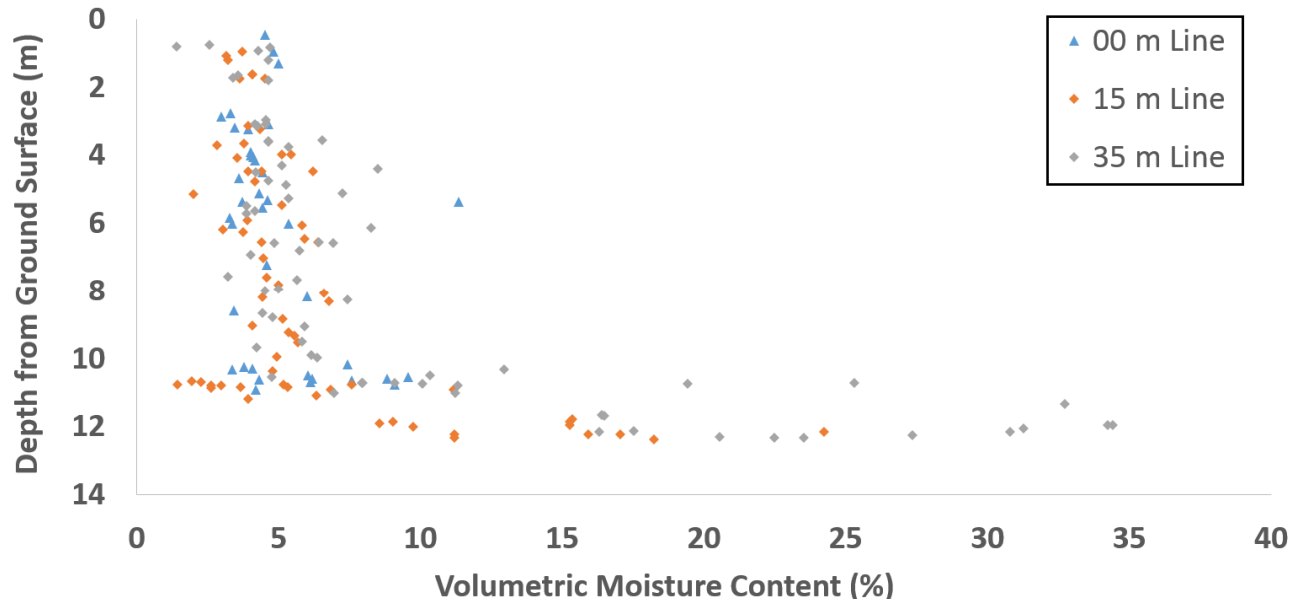


Plan

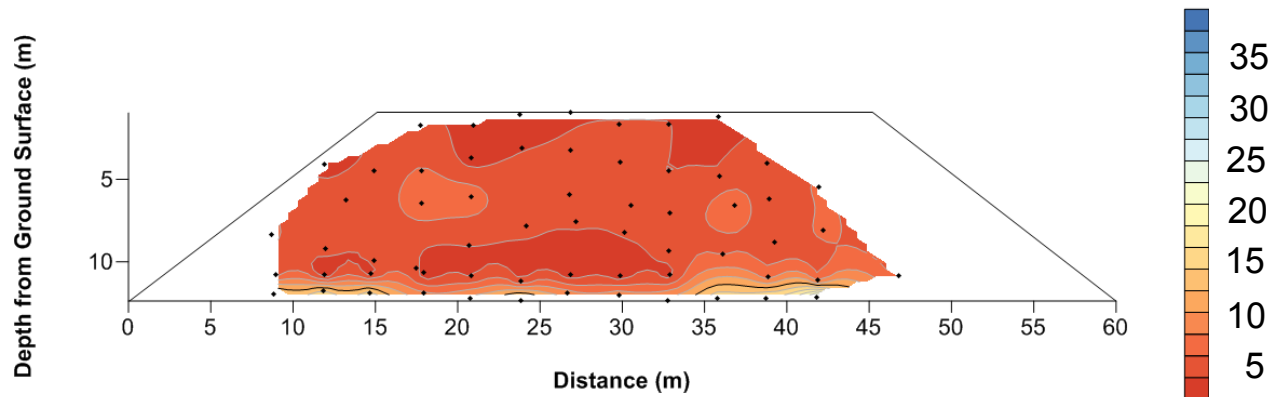


- ▲ Approximate Trench Sample Location
- - - Approximate Trench Location
- Basal Collection Lysimeter (BCL)
- Type 1 BCL cover
- ▨ 2" Type 1 Crush over Geomembrane
- Coarse PK

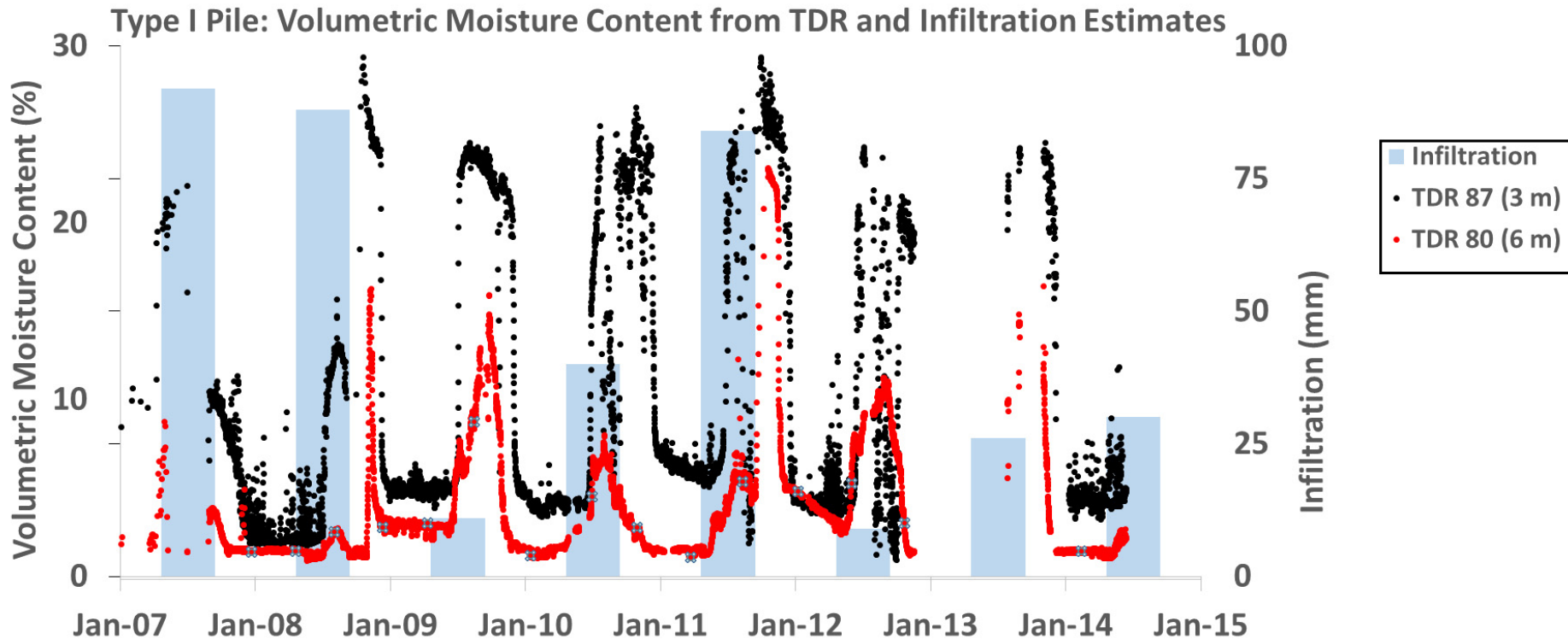
Type I Pile: Volumetric Moisture Content



Cross section through 15 m line



Type I Pile: VMC from TDR Probes and Infiltration



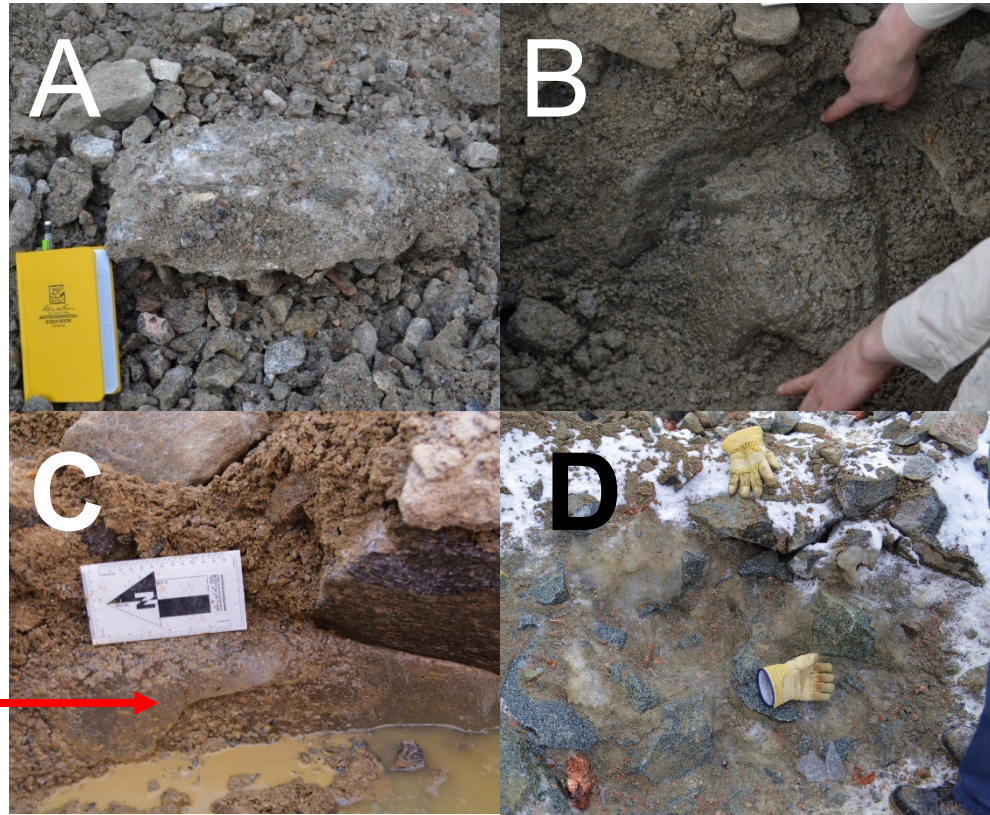
Type I Pile: Ice Characterization

A: Matrix Ice

B: Ice lenses 10-30 cm

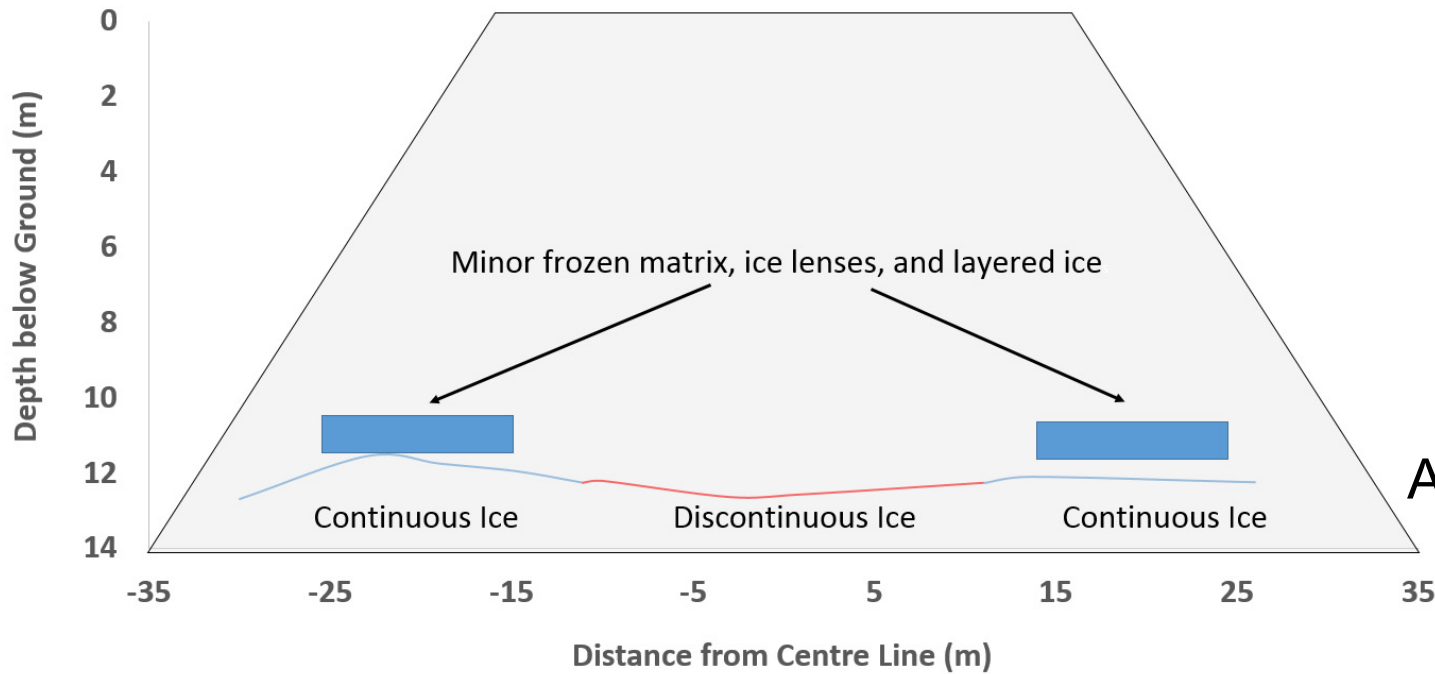
C: Ice lens with freeze thaw seam – Multi year ice

D: Continuous ice



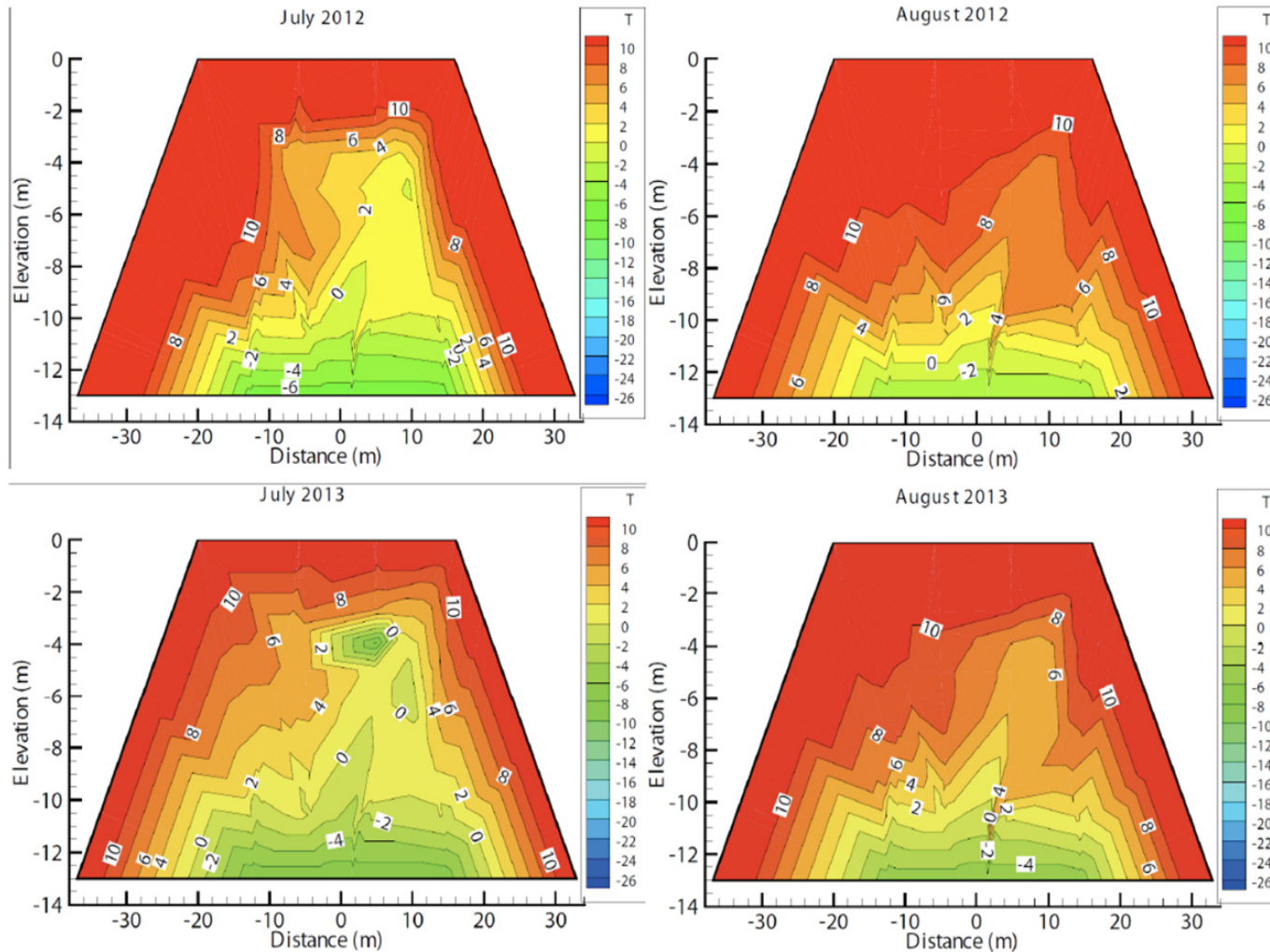
Freeze thaw seam

Type I Pile: Cross section of Ice Distribution in Test Pile



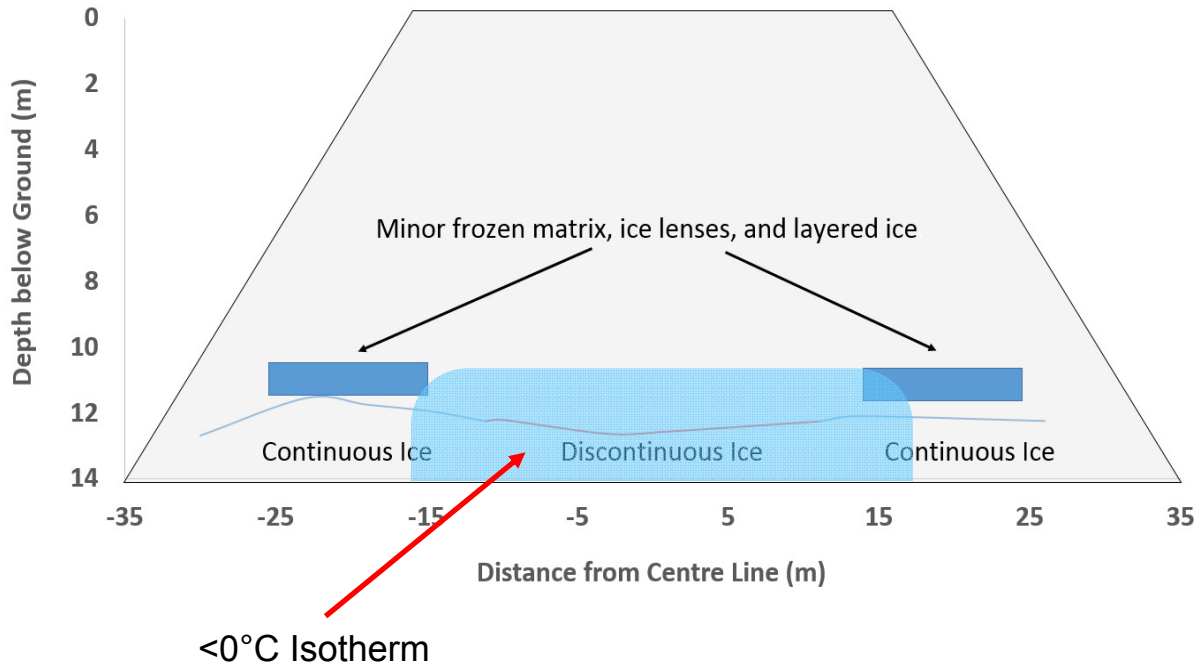
Active zone = 12 m

Type I Pile: Thermal Regime

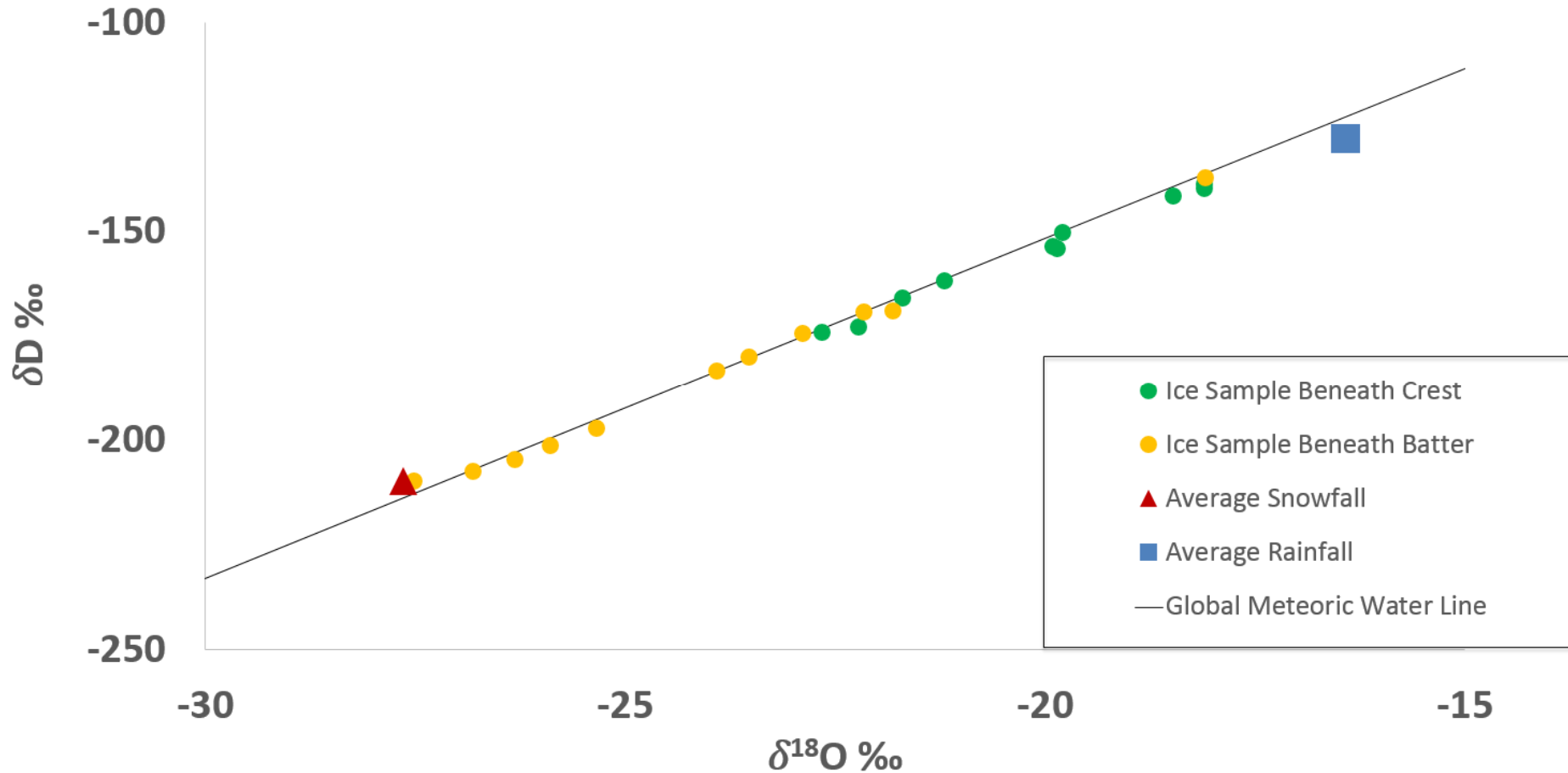


Type I Pile: Ice Characterization

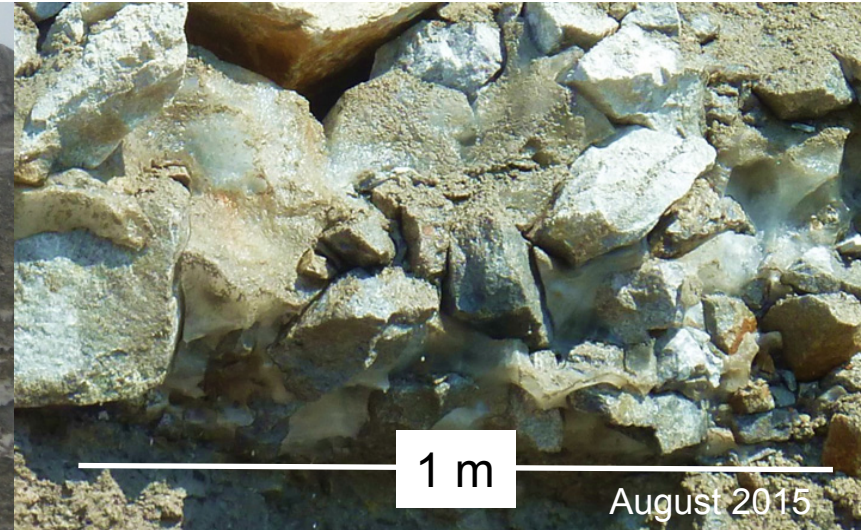
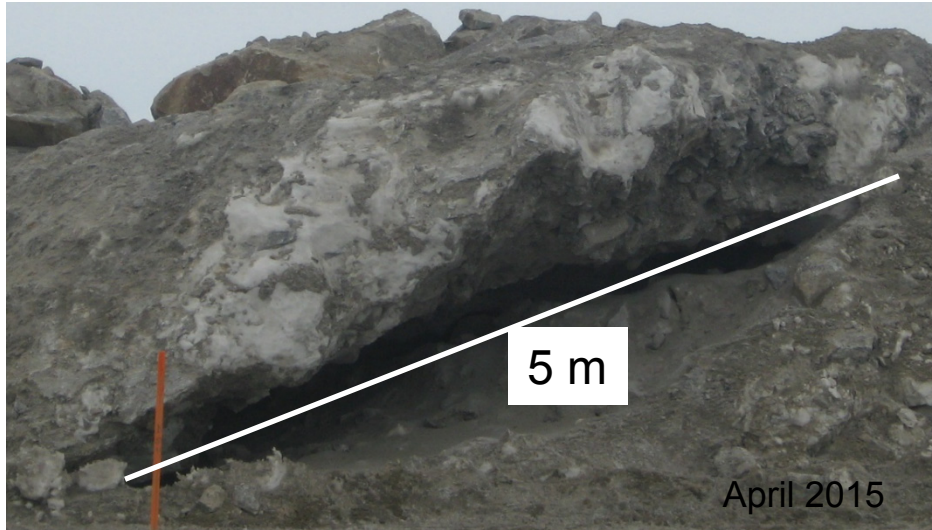
- The most significant ice accumulation is in areas which reach above freezing temperatures (0 – 6 °C)
- The batters are not thawed for long enough of a period to melt continuous ice
- Thawed matrix adjacent to ice lenses in batters suggests matrix ice is first to melt, creating the potential for water to be transmitted



Type I Pile: Ice Isotopic Characterization

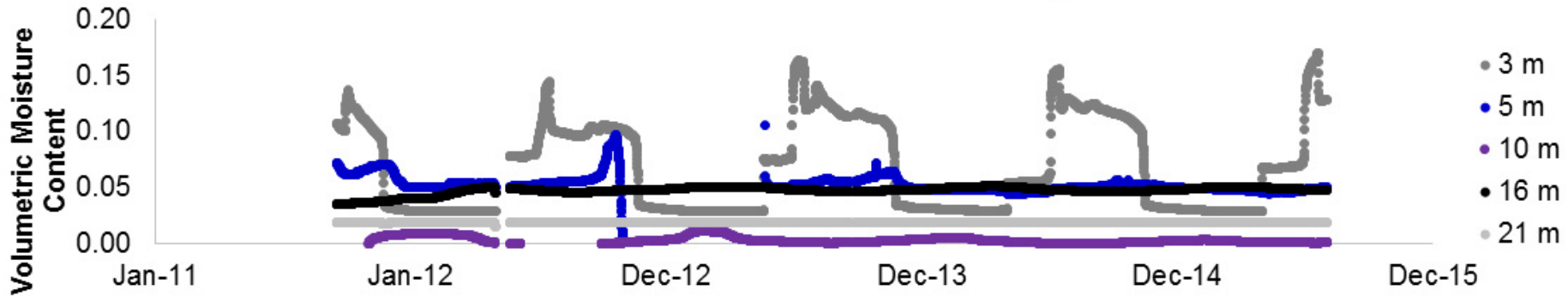


Full Scale Pile: Ice Characterization

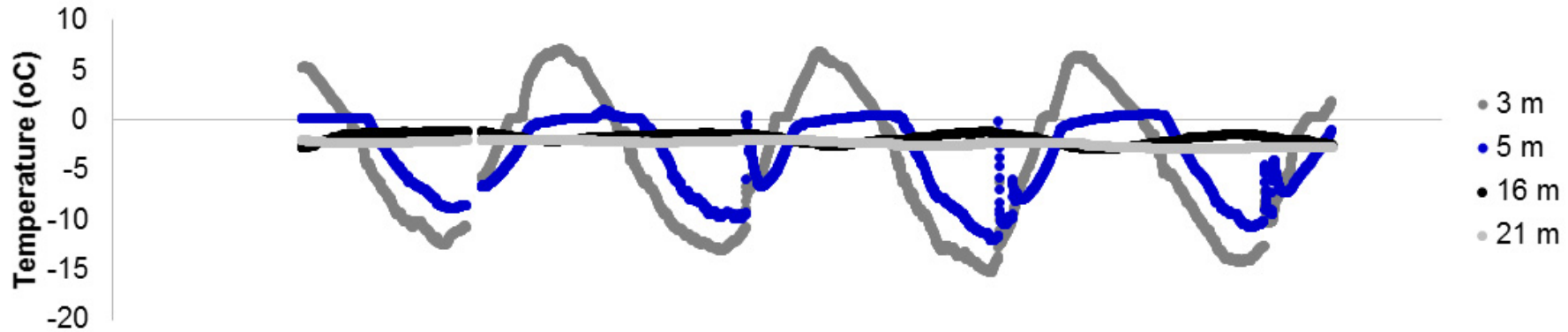


Full Scale Pile

VMC at Borehole FD4 Full Scale Dump



Temperature at FD4 Borehole Full Scale Dump





Summary

- 14 m tall uncovered test pile required a wet-up time of 3 years as indicated by volumetric moisture content and outflow from basal collection lysimeters
- Pore water moves at a velocity of 1-2 cm/day when thawed
- Average transit time of the more mobile pore water within test pile is approximately 2.3 active years
- A nine year record of a conservative tracer test has less than 50% mass recovery
 - Low velocity flow paths
 - Potential complication by ice accumulation



Summary

- Moisture contents during deconstruction were in agreement with TDR probes, supporting historic data
- Significant ice accumulation is able to remain in areas of the active zone during the late summer
- Ice is continuous beneath the batters of the pile and discontinuous beneath the crown where infiltration is limited
- Characterization of ice and behaviour of moisture in the full scale pile are similar to observations from test piles

