

**C.4 Use of Low Permeability Covers and Liners in Solid Waste
Management - An Opportunity for Technology Transfer**

Tony Sperling

Sperling Hansen Associates



**Use of Low Permeability Covers and Liners
in Solid Waste Management
An Opportunity for Technology Transfer**

***7th Annual B.C. Metal Leaching / ARD Workshop
November 29th, 2000***

Presented by Dr. Tony Sperling, P.Eng.



**SPERLING
HANSEN
ASSOCIATES**

AGENDA

- ***Solid Waste Management in B.C.***
- ***Environmental Impacts***
- ***Current Regulations***
- ***Elements of Landfill Covers***
- ***HELP Model***
- ***Closure Solutions***
- ***Slope Stability***
- ***Top Soil and Revegetation***
- ***Surface Water Control***
- ***Typical Costs***

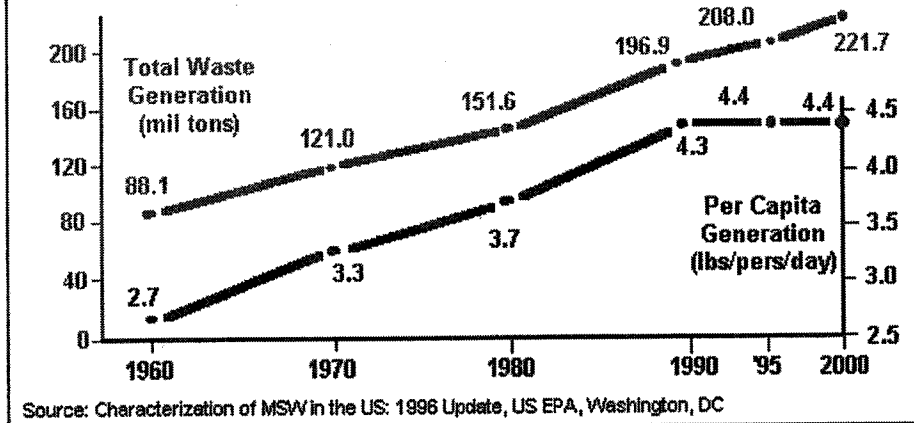


**SPERLING
HANSEN
ASSOCIATES**

**SPERLING HANSEN ASSOCIATES
1401 CROWN STREET
NORTH VANCOUVER BC
V7J 1G4
(604) 986-7723**

MSW Generation in North America

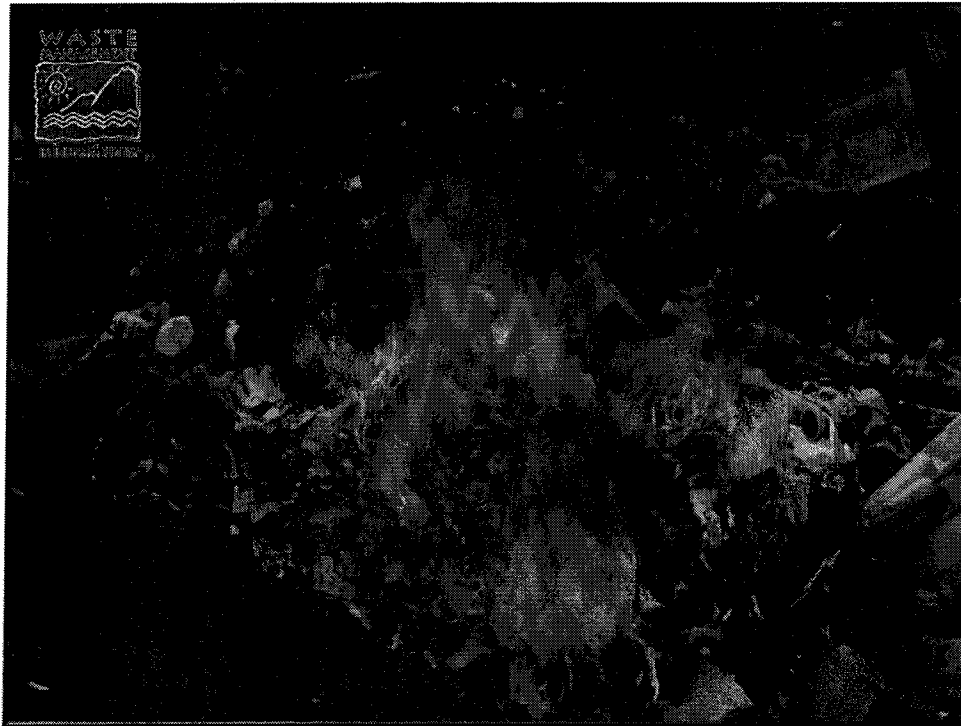
WASTE GENERATION RATES - 1960 TO 2000



**SPERLING
HANSEN
ASSOCIATES**



SPERLING HANSEN ASSOCIATES
1401 CROWN STREET
NORTH VANCOUVER BC
V7J 1G4
(604) 986-7723



SPERLING HANSEN ASSOCIATES
1401 CROWN STREET
NORTH VANCOUVER BC
V7J 1G4
(604) 986-7723



**Leachate at Terrace
Landfill**

- **BOD**
- **Ammonia / Nitrate**
- **Iron**
- **Manganese**
- **Chloride**



**SPERLING
HANSEN
ASSOCIATES**



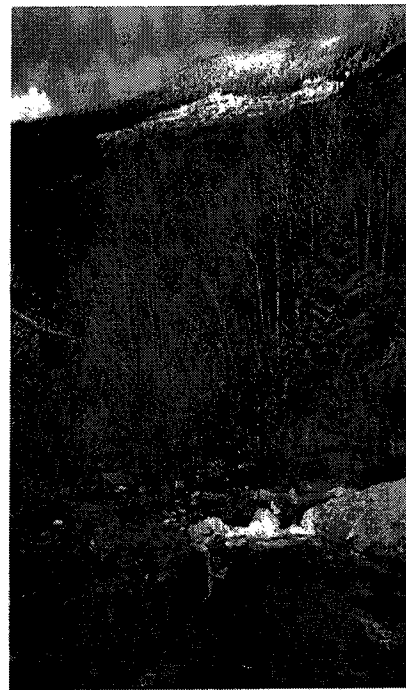
SPERLING HANSEN ASSOCIATES
1401 CROWN STREET
NORTH VANCOUVER BC
V7J 1G4
(604) 986-7723

Whistler Landfill in 1998.

- *Leachate can be toxic to fish (96 hour LC_{50})*
- *Treatment options are:*
 - *Waste Water Treatment Plant.*
 - *On-site aeration pond.*
 - *Wetland treatment.*
 - *Phyto-remediation.*



SPERLING
HANSEN
ASSOCIATES

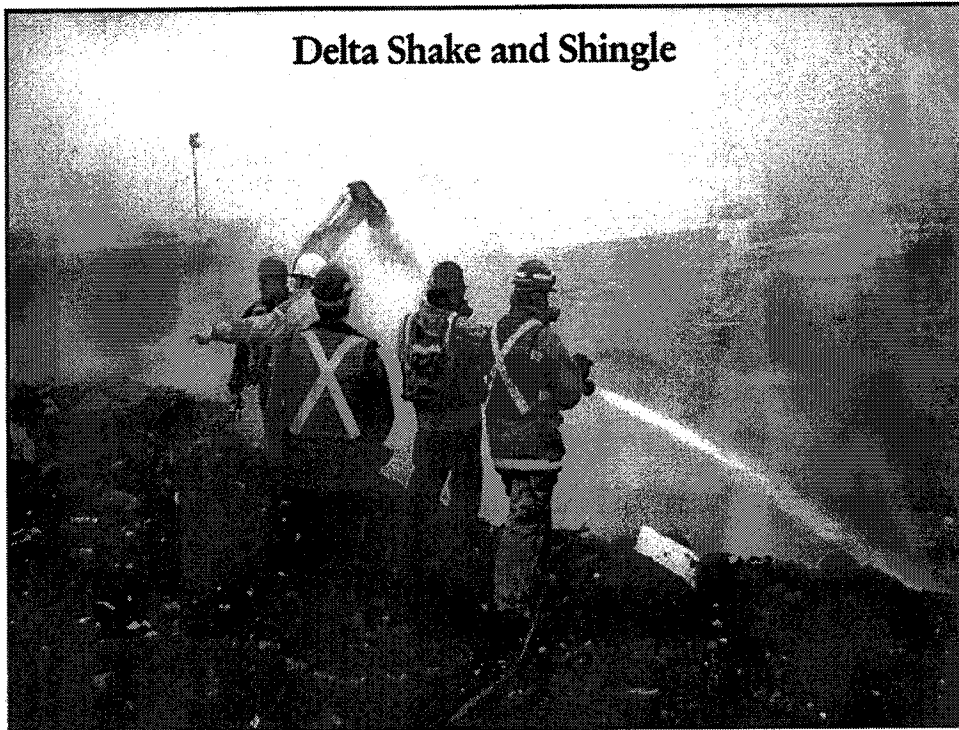


Hartland Landfill



SPERLING HANSEN ASSOCIATES
1401 CROWN STREET
NORTH VANCOUVER BC
V7J 1G4
(604) 986-7723

Delta Shake and Shingle



Regulations

- *Landfills regulated by MoELP.*
- *Landfill Criteria (1995) provide guidelines.*
- *Operational certificates set performance standards.*
 - *2 m clay liner $K < 1 \times 10^{-6}$ cm/s or membrane.*
 - *Water table depth > 1.2 m.*
 - *Clay or geomembrane cap.*
 - *300 m setback from houses & wells.*
 - *100 m setback from creeks.*
 - *No pollution beyond property boundary.*
 - *Quarterly monitoring program.*



SPERLING
HANSEN
ASSOCIATES

SPERLING HANSEN ASSOCIATES
1401 CROWN STREET
NORTH VANCOUVER BC
V7J 1G4
(604) 986-7723

Regulations for Landfill Closure

- *Close inactive areas within one year.*
- *Final closure cap to include:*
 - *1 m thick barrier with $K < 1.0 \times 10^{-5}$ cm/s*
 - *300 mm thick top soil layer.*
- *Monitoring to continue 25 years post closure.*
- *Contributions to closure fund required during operations.*



SPERLING
HANSEN
ASSOCIATES

Objectives of Landfill Closure

- *Isolate refuse from receptors.*
- *Minimize leachate production.*
- *Facilitate collection of landfill gas.*
- *Provide growing medium for vegetation.*
- *Return land to compatible end use.*



SPERLING
HANSEN
ASSOCIATES

SPERLING HANSEN ASSOCIATES
1401 CROWN STREET
NORTH VANCOUVER BC
V7J 1G4
(604) 986-7723

Strategies for Effective Closure

- *Prevent run-on with diversion ditches.*
- *Provide adequate grade on landfill (5-33%).*
- *Effective impervious cover.*
- *Run-off control.*
- *Sedimentation.*
- *Design for settlement.*

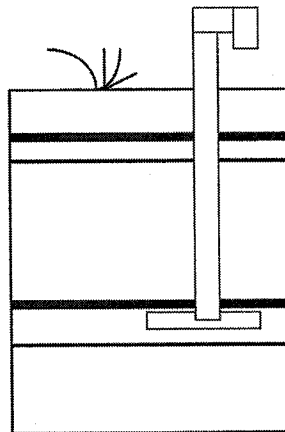
Rule of Thumb #1: Keep clean water clean.



SPERLING
HANSEN
ASSOCIATES

Elements of Landfill Closure Systems

- *Top Soil*
- *Filter (geotextile, soil)*
- *Drainage Layer (geonet, sand)*
- *Barrier (geomembrane, clay)*
- *Filter (geotextile, soil)*
- *Gas Collection Layer (gravel)*



SPERLING
HANSEN
ASSOCIATES

SPERLING HANSEN ASSOCIATES
1401 CROWN STREET
NORTH VANCOUVER BC
V7J 1G4
(604) 986-7723

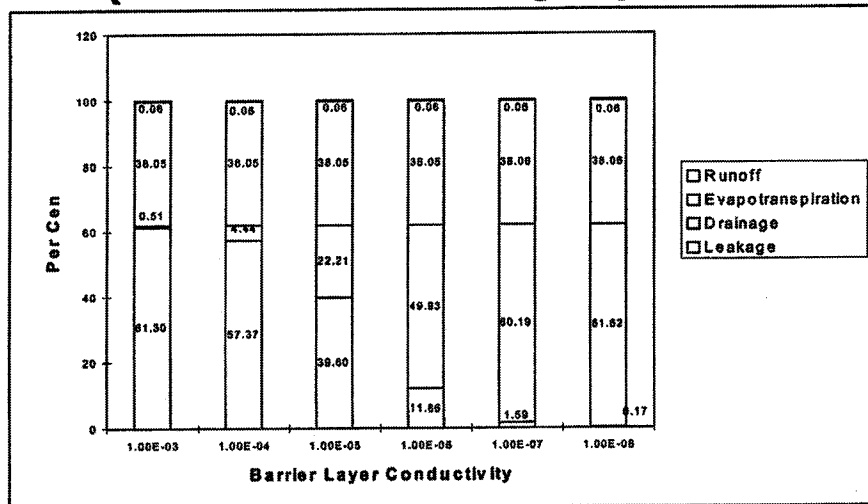
HELP Model

- **Hydrologic Evaluation of Landfill Performance.**
- **Developed by Corp. of Engineers for U.S. EPA.**
- **One dimensional model of water flow through soil and waste.**
 - **Precipitation**
 - **Run-off**
 - **Evapotranspiration**
 - **Soil Storage**
 - **Lateral Drainage**
 - **Percolation**



SPERLING
HANSEN
ASSOCIATES

HELP Sensitivity Analysis (1m Soil Barrier With Drainage Layer, 25% Slope)



SPERLING
HANSEN
ASSOCIATES

SPERLING HANSEN ASSOCIATES
1401 CROWN STREET
NORTH VANCOUVER BC
V7J 1G4
(604) 986-7723

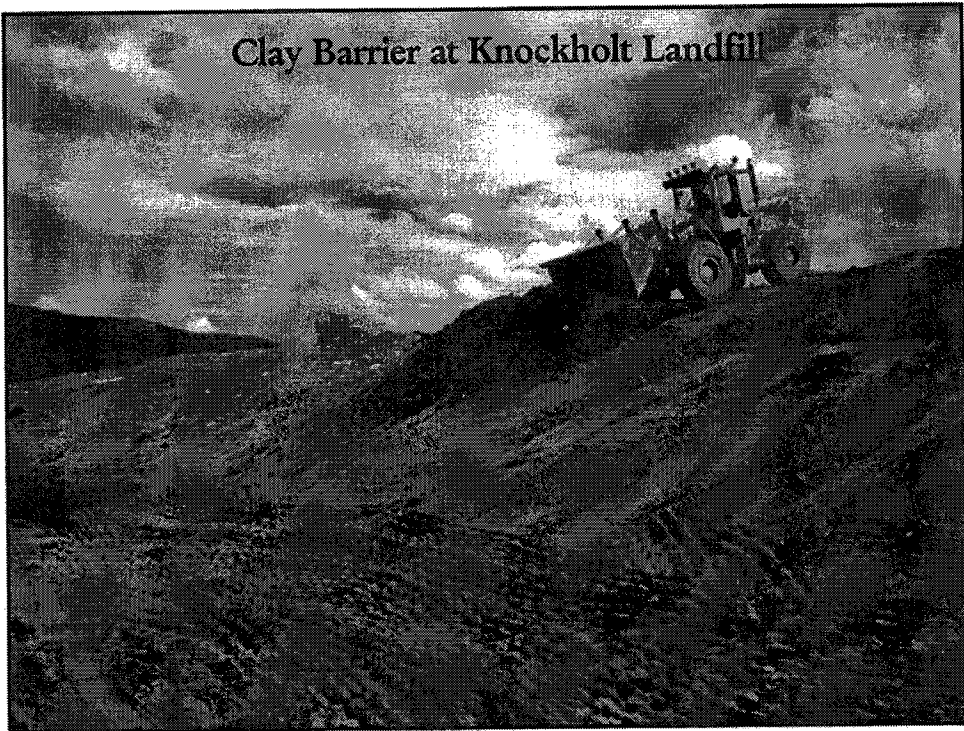
Closure Solutions

- **Clay Barrier**
- **Geomembrane Barrier**
 - **PVC**
 - **LLDPE**
 - **HDPE**
 - **GCL**
- **Composite Barrier**
- **Dryland Cover System**

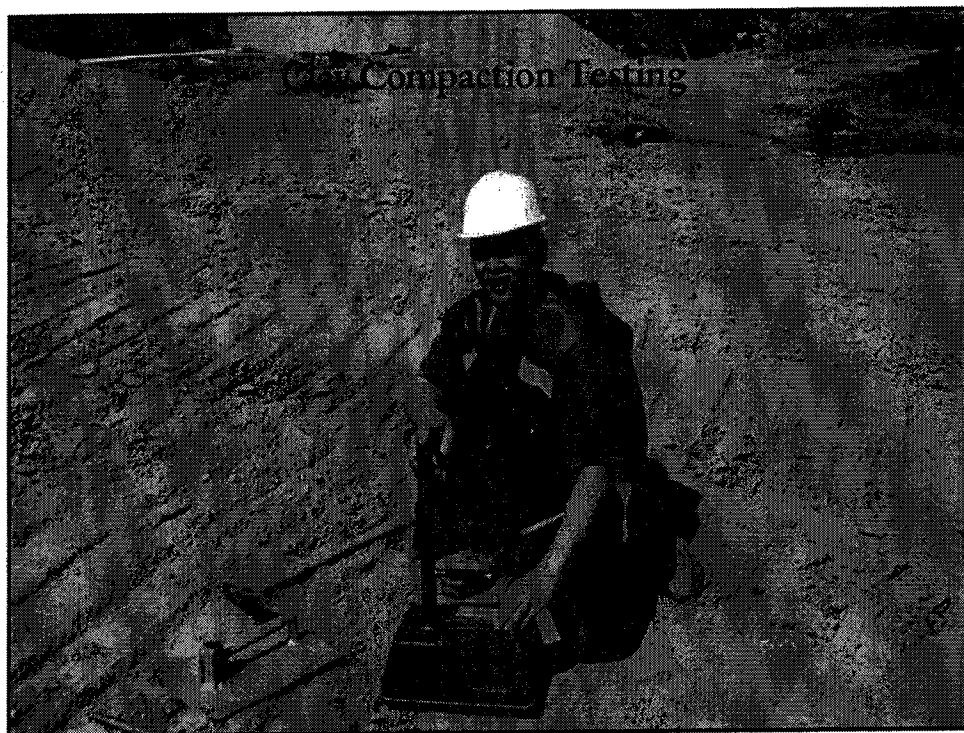
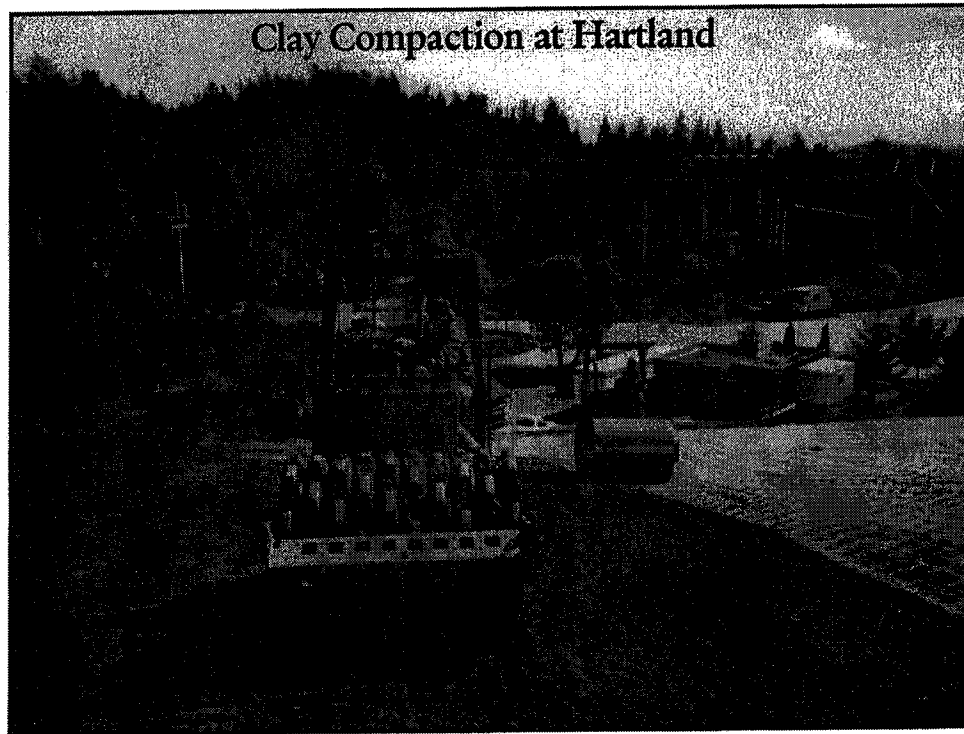


**SPERLING
HANSEN
ASSOCIATES**

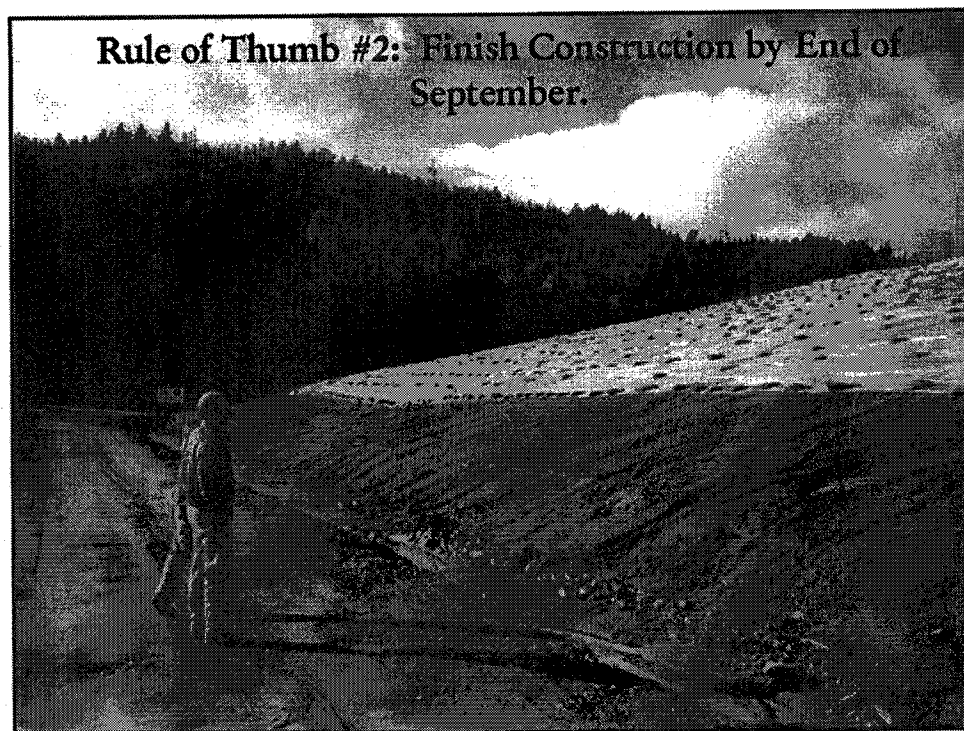
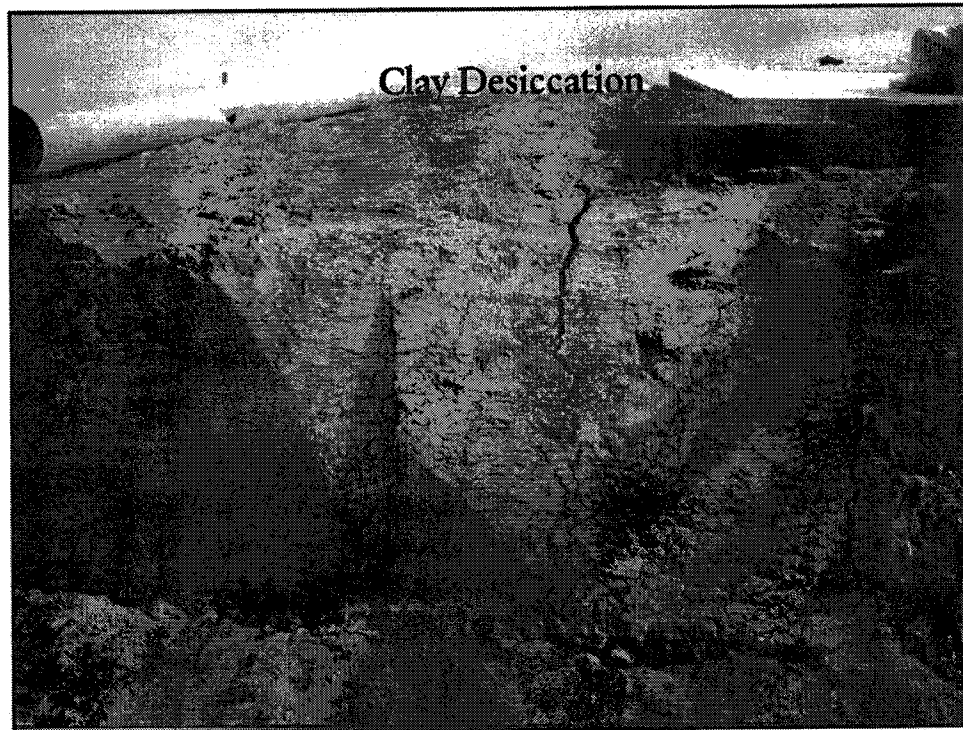
Clay Barrier at Knockholt Landfill



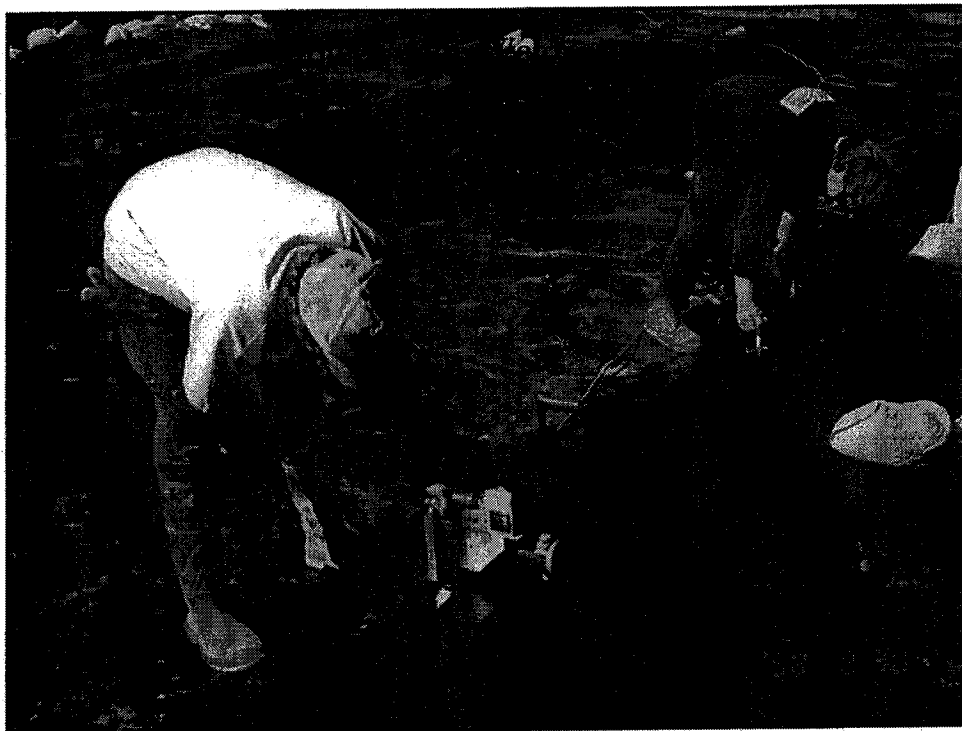
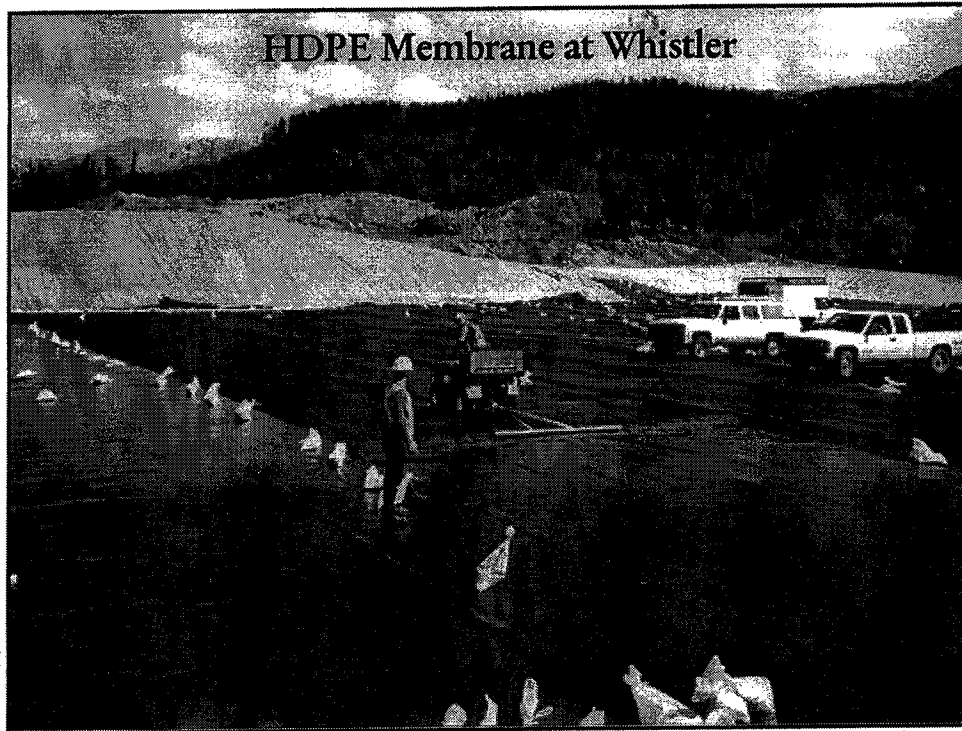
**SPERLING HANSEN ASSOCIATES
1401 CROWN STREET
NORTH VANCOUVER BC
V7J 1G4
(604) 986-7723**



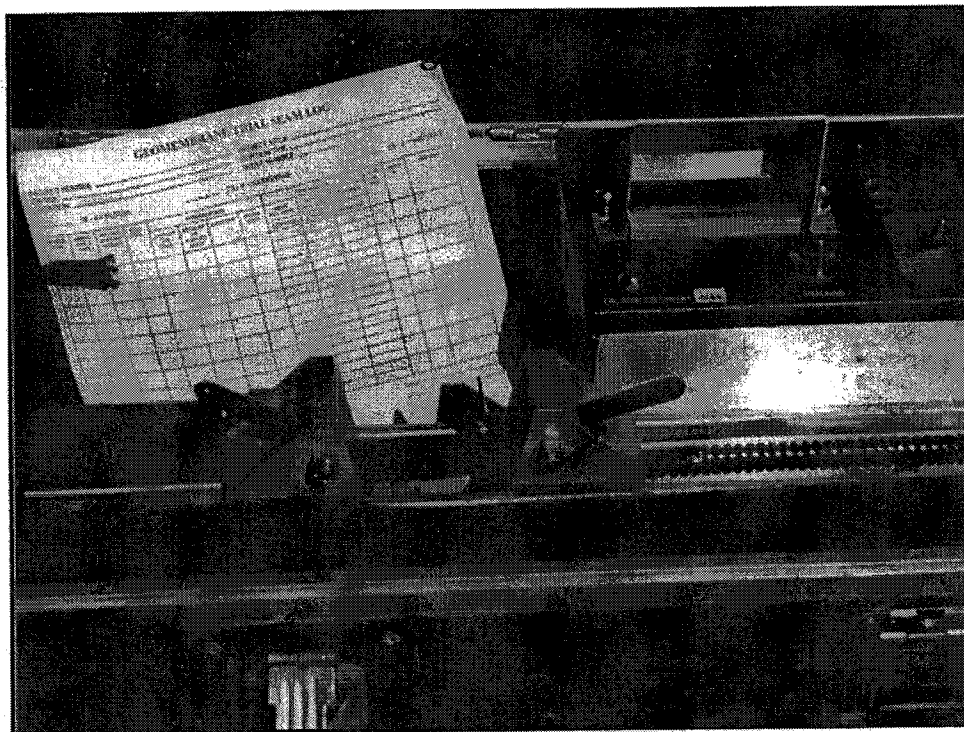
SPERLING HANSEN ASSOCIATES
1401 CROWN STREET
NORTH VANCOUVER BC
V7J 1G4
(604) 986-7723



SPERLING HANSEN ASSOCIATES
1401 CROWN STREET
NORTH VANCOUVER BC
V7J 1G4
(604) 986-7723

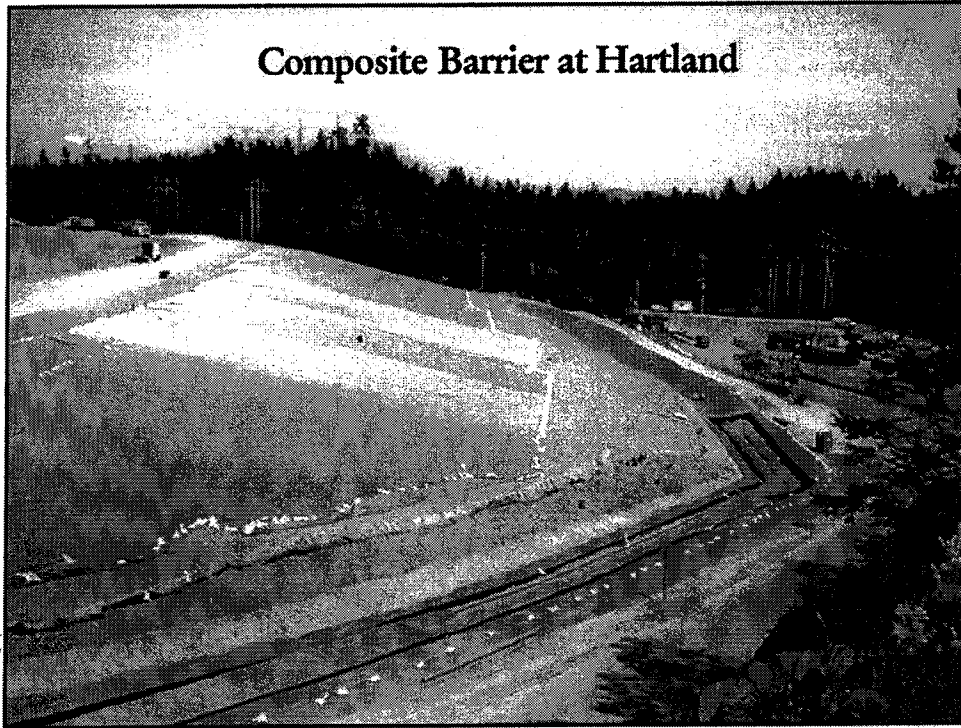


SPERLING HANSEN ASSOCIATES
1401 CROWN STREET
NORTH VANCOUVER BC
V7J 1G4
(604) 986-7723

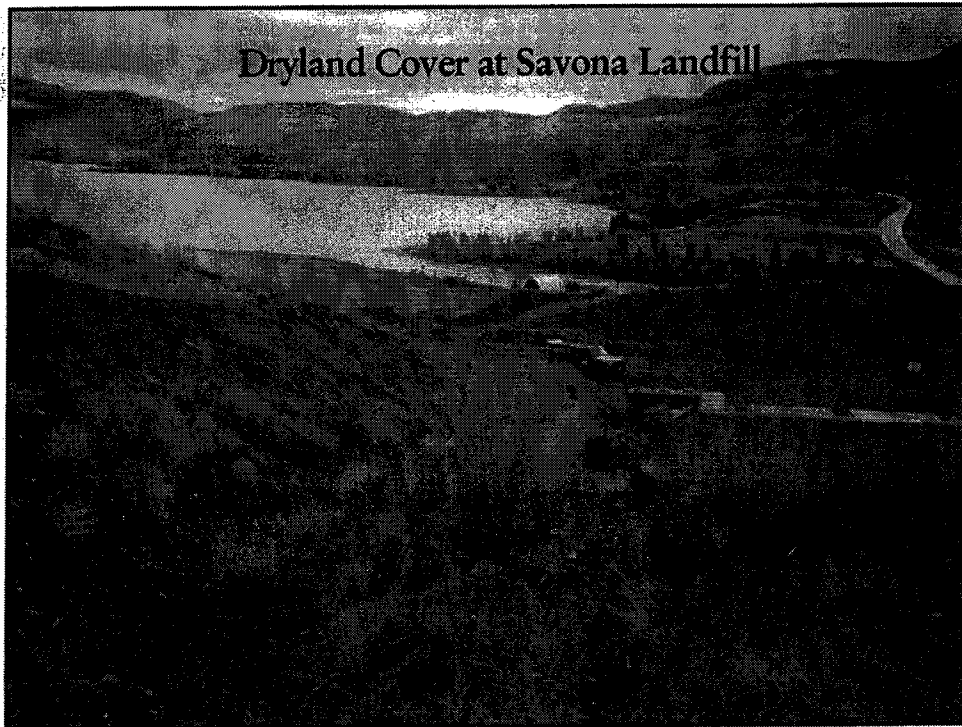


SPERLING HANSEN ASSOCIATES
1401 CROWN STREET
NORTH VANCOUVER BC
V7J 1G4
(604) 986-7723

Composite Barrier at Hartland



Dryland Cover at Savona Landfill



**SPERLING HANSEN ASSOCIATES
1401 CROWN STREET
NORTH VANCOUVER BC
V7J 1G4
(604) 986-7723**

Slope Stability

- **Deep seated failure.**
- **Cover System Veneer failure.**
- **Interface friction is critical.**
 - HDPE / Geotextile
 - PVC / Clay
 - PVC / Sand
- **Pore water pressures reduce stability.**

Rule of Thumb #3:

- Clay caps on slopes < 2.5H to 1.
- membrane caps on slopes < 3H:1V.



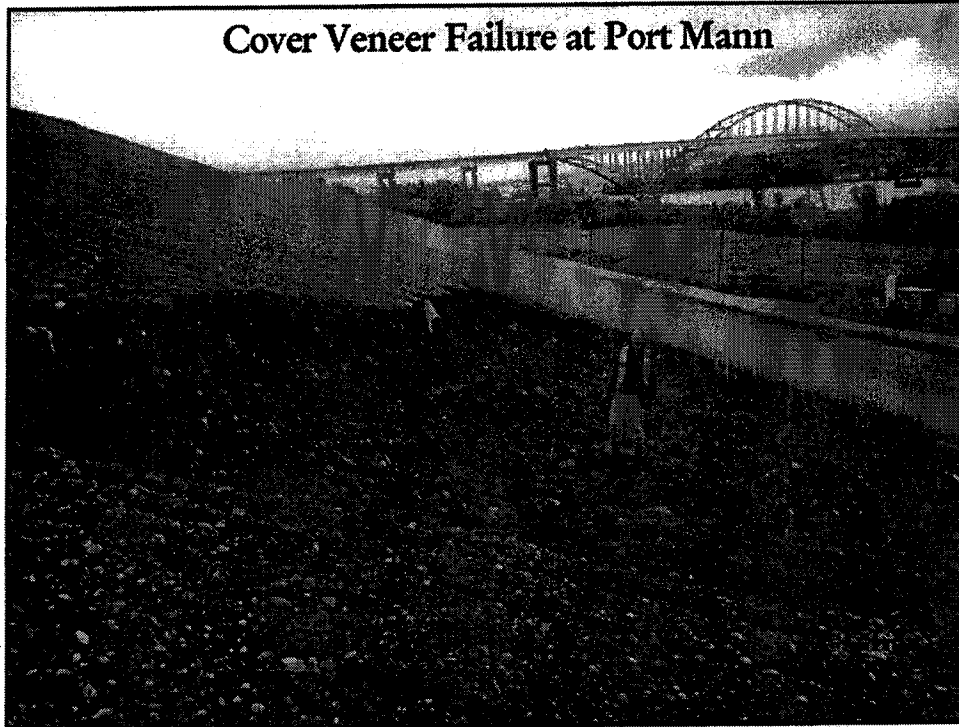
SPERLING
HANSEN
ASSOCIATES



Rumpke Landfill, U.S.

SPERLING HANSEN ASSOCIATES
1401 CROWN STREET
NORTH VANCOUVER BC
V7J 1G4
(604) 986-7723

Cover Veneer Failure at Port Mann

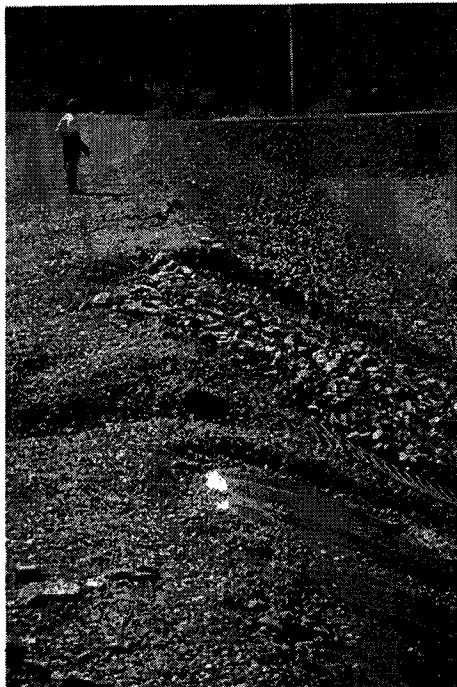


Closure Issues

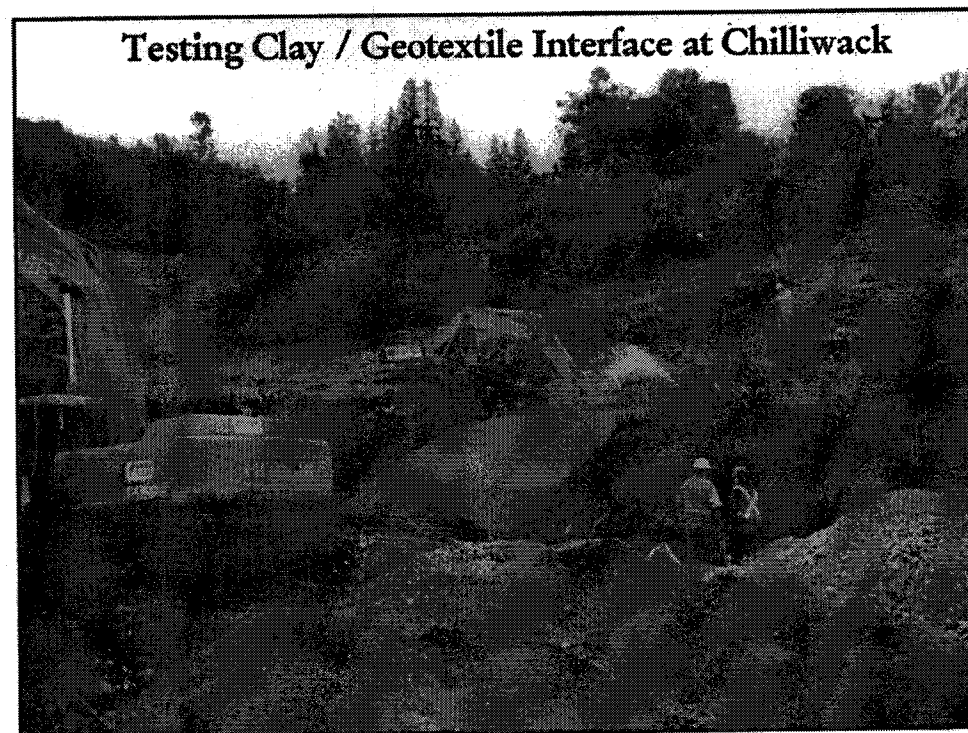
- *Lack of interface friction resulted in failure of cover.*
- *Interface friction testing and test pad is critical to avoid such problems.*



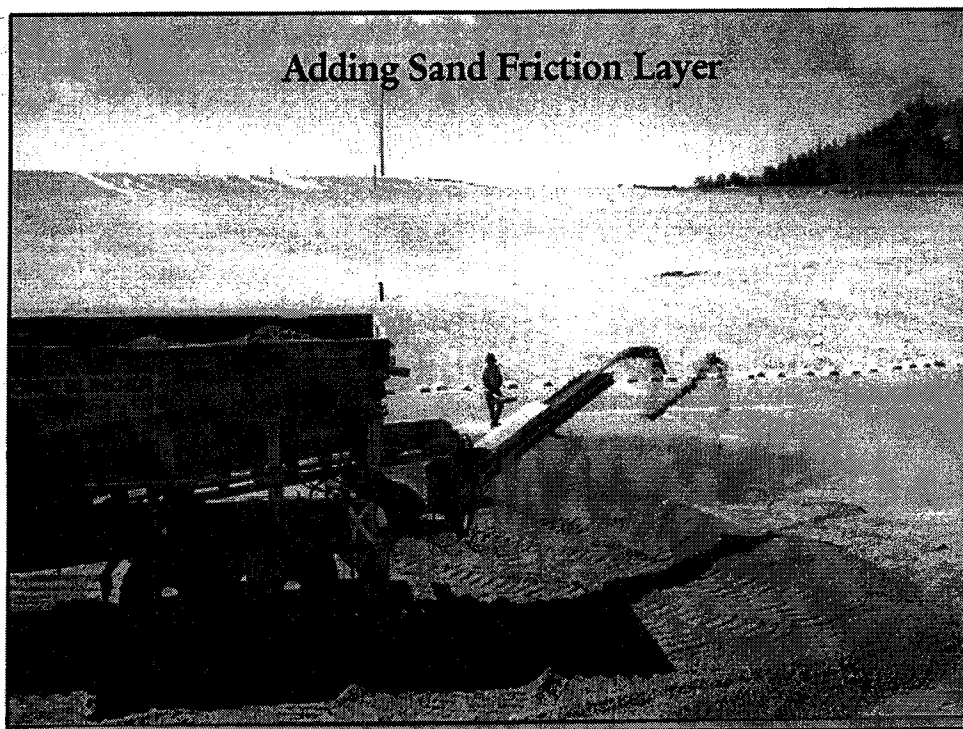
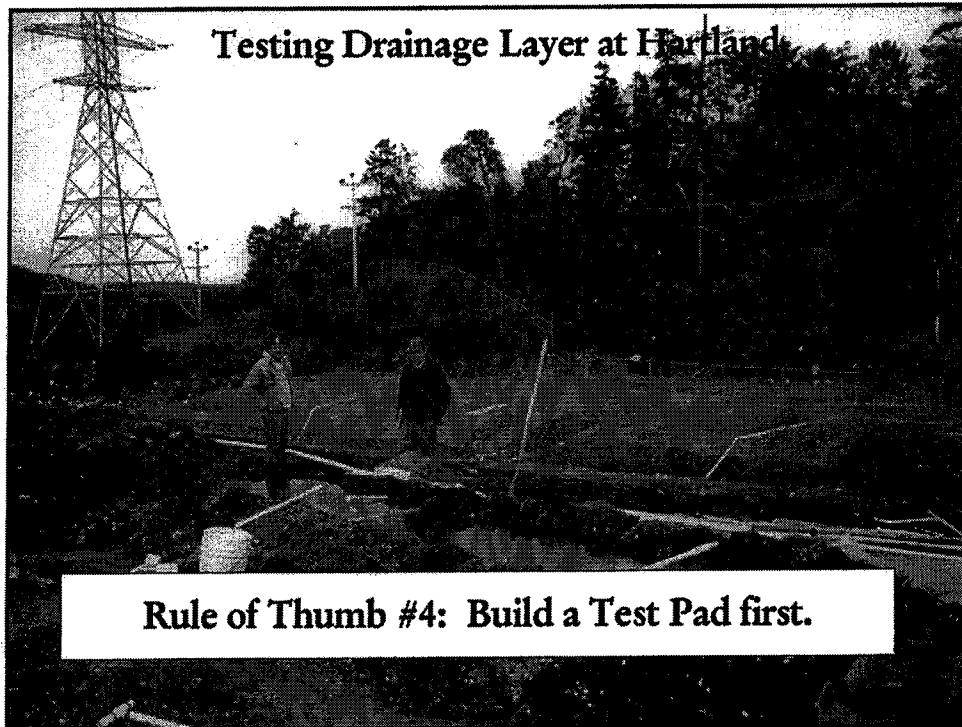
SPERLING
HANSEN
ASSOCIATES



SPERLING HANSEN ASSOCIATES
1401 CROWN STREET
NORTH VANCOUVER BC
V7J 1G4
(604) 986-7723



**SPERLING HANSEN ASSOCIATES
1401 CROWN STREET
NORTH VANCOUVER BC
V7J 1G4
(604) 986-7723**



**SPERLING HANSEN ASSOCIATES
1401 CROWN STREET
NORTH VANCOUVER BC
V7J 1G4
(604) 986-7723**

Drainage Layers

- Reduce Head Build Up
- Improve Top Soil Stability
- Improve Efficiency of Cover System (10=20%)
- Mandatory in Wet Climate

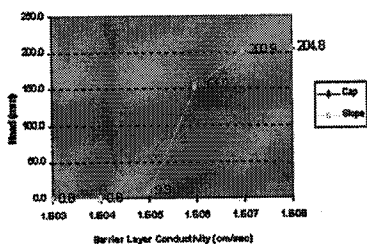


SPERLING
HANSEN
ASSOCIATES

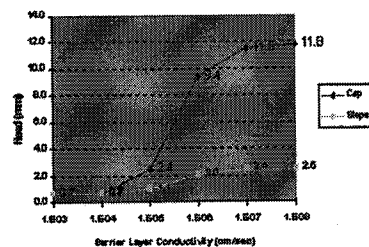
Help Sensitivity Analysis.

Peak Daily Average Heads on Top of Barrier Layer

Without Drainage Layer

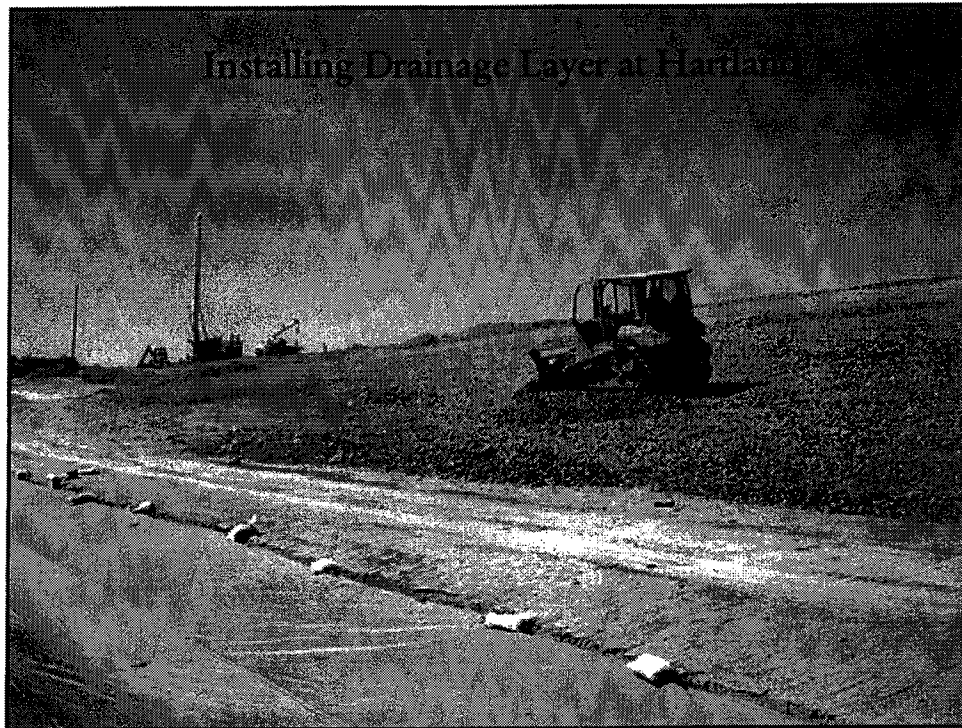


With Drainage Layer



SPERLING
HANSEN
ASSOCIATES

SPERLING HANSEN ASSOCIATES
1401 CROWN STREET
NORTH VANCOUVER BC
V7J 1G4
(604) 986-7723



Top Soil and Seeding

- ***Strip and stockpile top soil materials***
- ***Top soil layer thickness > 300 mm***
- ***Consider biosolids enhancement***
- ***Select right seed mix***
 - *Native species*
 - *Plant height and root penetration*
 - *Wildlife attraction*
- ***Broadcast vs. hydroseeding***



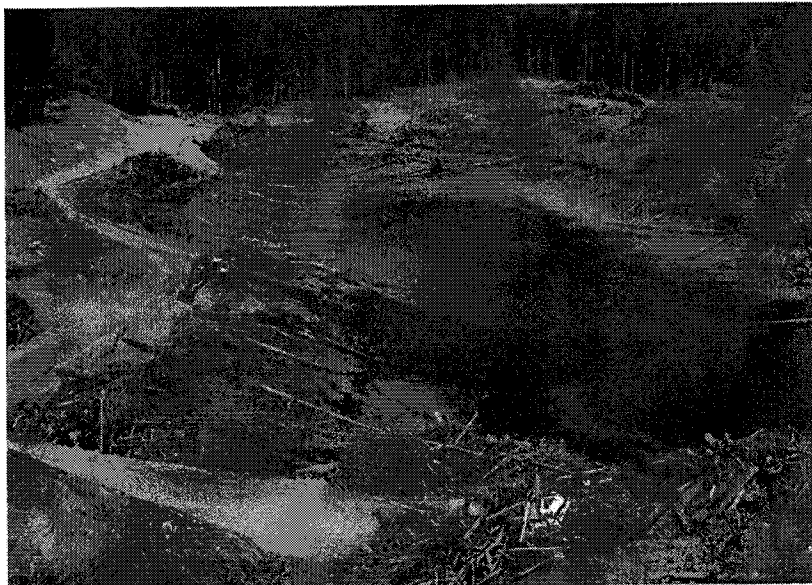
SPERLING
HANSEN
ASSOCIATES

SPERLING HANSEN ASSOCIATES
1401 CROWN STREET
NORTH VANCOUVER BC
V7J 1G4
(604) 986-7723



**SPERLING
HANSEN
ASSOCIATES**

Top Soil Application at Knockholt



**SPERLING
HANSEN
ASSOCIATES**

Saving Peat from Heal Lake

**SPERLING HANSEN ASSOCIATES
1401 CROWN STREET
NORTH VANCOUVER BC
V7J 1G4
(604) 986-7723**



**SPERLING
HANSEN
ASSOCIATES**

Drying Peat at Hartland



**SPERLING
HANSEN
ASSOCIATES**

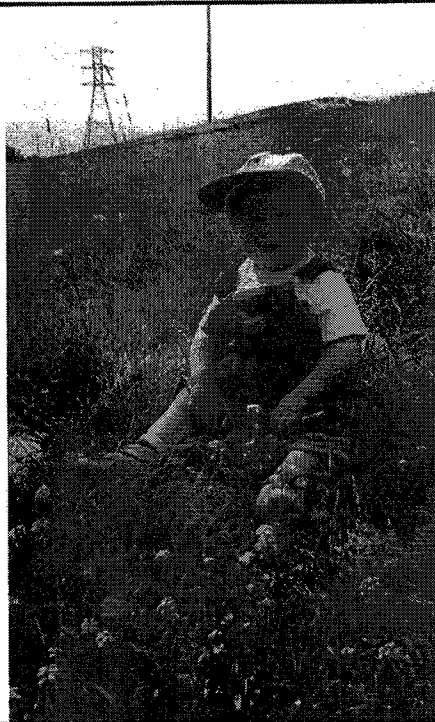
Applying Dried Peat as Top Soil

**SPERLING HANSEN ASSOCIATES
1401 CROWN STREET
NORTH VANCOUVER BC
V7J 1G4
(604) 986-7723**

**The End
Product**



**SPERLING
HANSEN
ASSOCIATES**



**SPERLING
HANSEN
ASSOCIATES**

Excavating from Footprint in Chilliwack



**SPERLING HANSEN ASSOCIATES
1401 CROWN STREET
NORTH VANCOUVER BC
V7J 1G4
(604) 986-7723**



Rule of Thumb #5: Conserve on-site resources for future closure.



**SPERLING
HANSEN
ASSOCIATES**

480,000 m³ of extra air space plus clay and gravel for final closure at cost of \$2.76/m³.

Run-Off Control

- ***Design for 100 year storm events.***
- ***Provide ditching every 15 to 20 m elevation.***
- ***Armour ditching with rip-rap (75-150 mm).***
- ***Protect ditch from erosion with geotextile.***
- ***Design for settlement :***
 - *downchutes in middle of landfill*
 - *grades toward thickest fill*
- ***Use flexible lining systems***



**SPERLING
HANSEN
ASSOCIATES**

**SPERLING HANSEN ASSOCIATES
1401 CROWN STREET
NORTH VANCOUVER BC
V7J 1G4
(604) 986-7723**

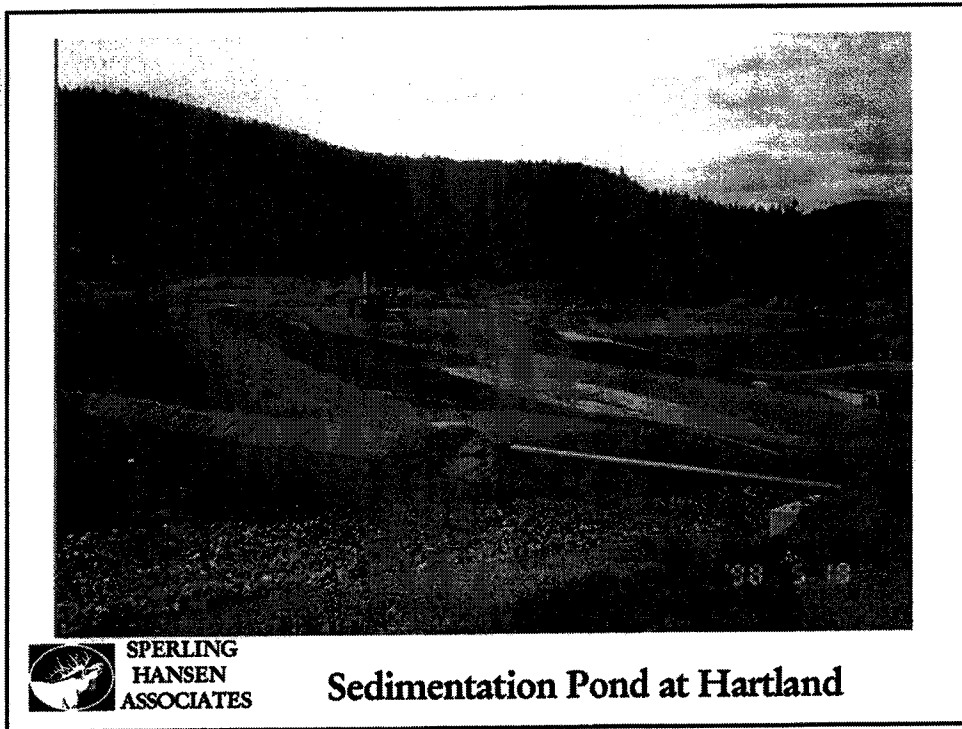
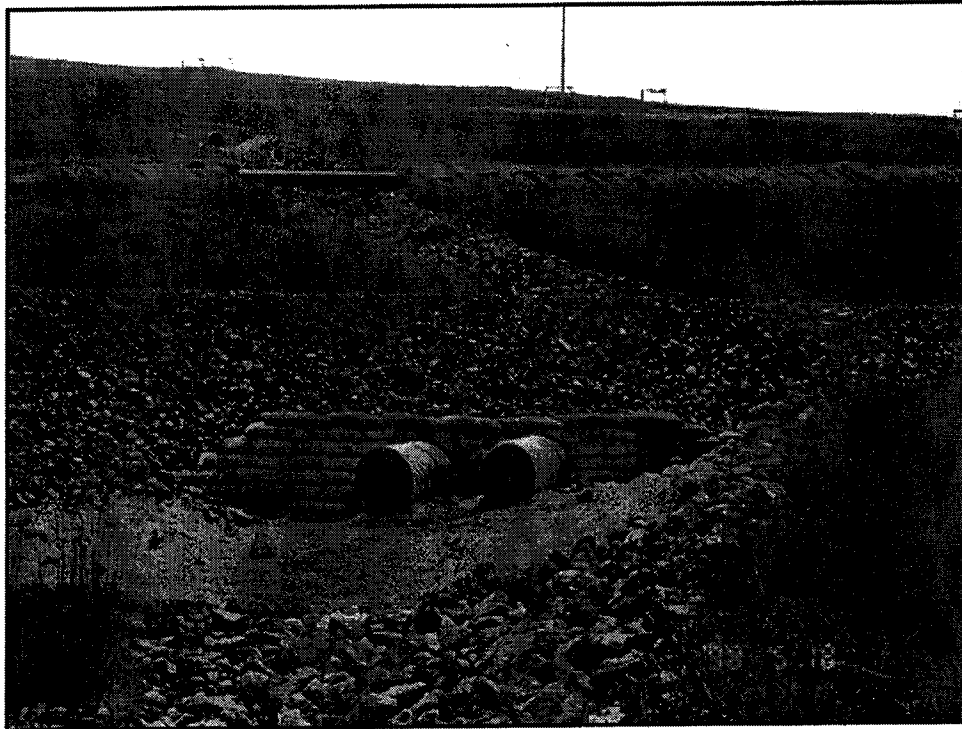
**Rigid culvert don't
work well.**



**SPERLING
HANSEN
ASSOCIATES**



**SPERLING HANSEN ASSOCIATES
1401 CROWN STREET
NORTH VANCOUVER BC
V7J 1G4
(604) 986-7723**



**SPERLING
HANSEN
ASSOCIATES**

Sedimentation Pond at Hartland

**SPERLING HANSEN ASSOCIATES
1401 CROWN STREET
NORTH VANCOUVER BC
V7J 1G4
(604) 986-7723**



**SPERLING
HANSEN
ASSOCIATES**

Run-On Diversion Ditch at Savona



Rule of Thumb #6: Always Oversize Diversion Ditches and Culverts.



**SPERLING
HANSEN
ASSOCIATES**

Trans-Canada Highway after Washout

**SPERLING HANSEN ASSOCIATES
1401 CROWN STREET
NORTH VANCOUVER BC
V7J 1G4
(604) 986-7723**

Actual Landfill Closure Costs in B.C.

| Landfill | Year | Area (ha) | Cap Type | Gas | Toe Berm | Cost | Unit Cost (/m2) |
|---------------------|------|--------------|------------|-----|-------------|-------------|--------------------|
| Hartland South Face | 1995 | 2.5 | PVC/Clay | Yes | Yes | \$1,044,909 | \$41.80 |
| Hartland North Face | 1996 | 5.2 | PVC/Clay | Yes | Yes | \$1,845,071 | \$35.48 |
| Savona | 1996 | 0.6 | Sand | No | No | \$46,317 | \$7.72 |
| Knockholt | 1997 | 0.2 | Clay | No | Yes | \$196,874 | \$82.03 |
| Campbell Mountain | 1998 | 0.6 | Clay | No | Yes | \$172,831 | \$27.88 |
| Hope | 1998 | 0.5 | Clay | No | Yes | \$234,877 | \$51.06 |
| Nanaimo | 1999 | 0.7 | PVC/Clay | Yes | Yes | \$304,072 | \$46.42 |
| Nanaimo | 2000 | 0.5 | PVC/Clay | Yes | Yes | \$360,463 | \$80.10 |
| Iona | 2000 | 0.9 | LLDPE/Clay | No | No | \$180,108 | \$19.37 |
| Logan Lake | 2000 | 2.5 | Clay | No | No | \$238,750 | \$9.55 |



**SPERLING
HANSEN
ASSOCIATES**

Landfill Closure Costs

- *For closure we budget \$250,000 to \$350,000 per Ha, including purchase and transport of materials.*
- *Toe berms and gas collection add 25 to 50% to costs.*
- *Costs can be reduced if soils available on-site.*
- *Costs can be reduced if exemptions justified:*
 - *Dryland closure with native materials.*
 - *Reduced clay thickness if low permeability clay.*
 - *Bioreactor closure approach.*

Rule of Thumb #7: Keep footprint as small as possible to minimize costs and leachate volumes.



**SPERLING
HANSEN
ASSOCIATES**

SPERLING HANSEN ASSOCIATES
1401 CROWN STREET
NORTH VANCOUVER BC
V7J 1G4
(604) 986-7723

Conclusions

- **Covers and liners are effective in preventing pollution of environment. "Keep clean water clean".**
- **Cost of lining systems is \$250,000 to \$500,000 per ha.**
- **For reliable covers side slopes < 3H:1V.**
- **To ensure stability, build a test pad first.**
- **Always provide effective drainage, oversize.**
- **During stripping conserve overburden resources for eventual closure.**
- **Maintain disturbed footprint as small as possible to minimize costs.**



SPERLING
HANSEN
ASSOCIATES

Food for Thought

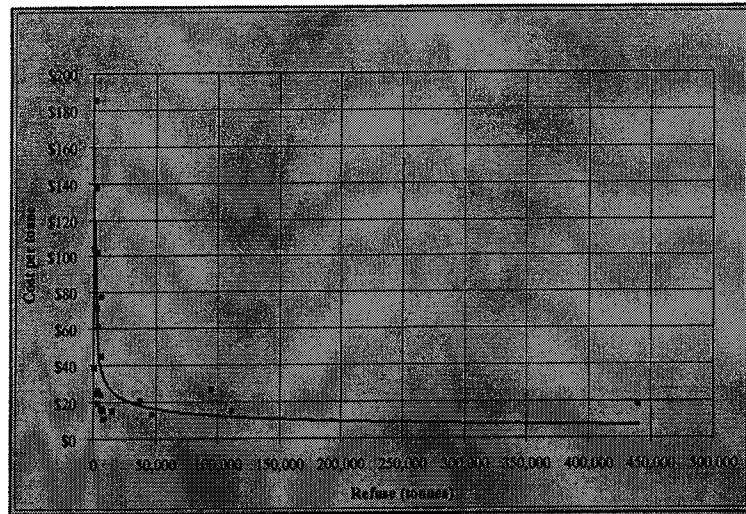
- **Highland Valley mines 90 million m³ per year.**
- **365 million lbs of copper per year worth \$292 million.**
- **Revenue per m³ disturbed is \$3.24.**
- **Hartland Landfill consumes 150,000 m³ of air space per year.**
- **Tipping fee revenue about \$75 per m³.**
- **Landfill costs are about \$35/m³.**
- **Landfills produce 10 to 20 times more revenue per m³ than open pit mines.**



SPERLING
HANSEN
ASSOCIATES

SPERLING HANSEN ASSOCIATES
1401 CROWN STREET
NORTH VANCOUVER BC
V7J 1G4
(604) 986-7723

Operating Cost per Tonne - B.C. Experience

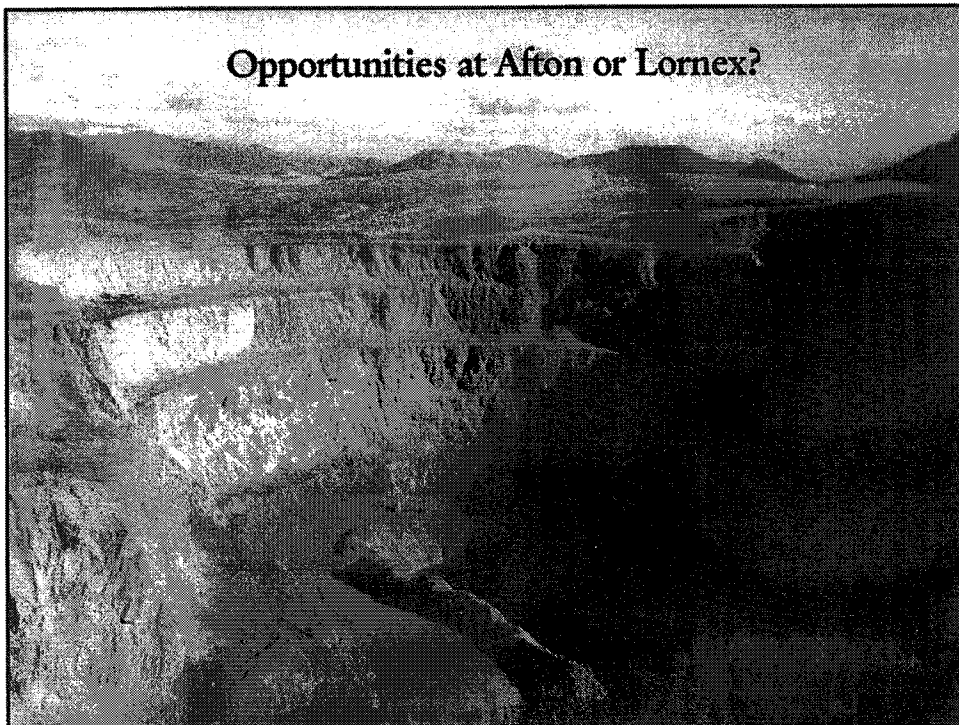


**SPERLING
HANSEN
ASSOCIATES**



SPERLING HANSEN ASSOCIATES
1401 CROWN STREET
NORTH VANCOUVER BC
V7J 1G4
(604) 986-7723

Opportunities at Afton or Lornex?



**SPERLING HANSEN ASSOCIATES
1401 CROWN STREET
NORTH VANCOUVER BC
V7J 1G4
(604) 986-7723**