



# Tahltan Perspective – ML/ARD

Tahltan.org



# Acknowledgements

- Tahltan Heritage Resources Environmental Assessment Team (THREAT):
  - Vera Asp
  - Jerry Asp
  - Dwayne Day
  - Lee Marion
- Tahltan Elders – Bill McPhee, Ed Asp
- Tahltan Leadership

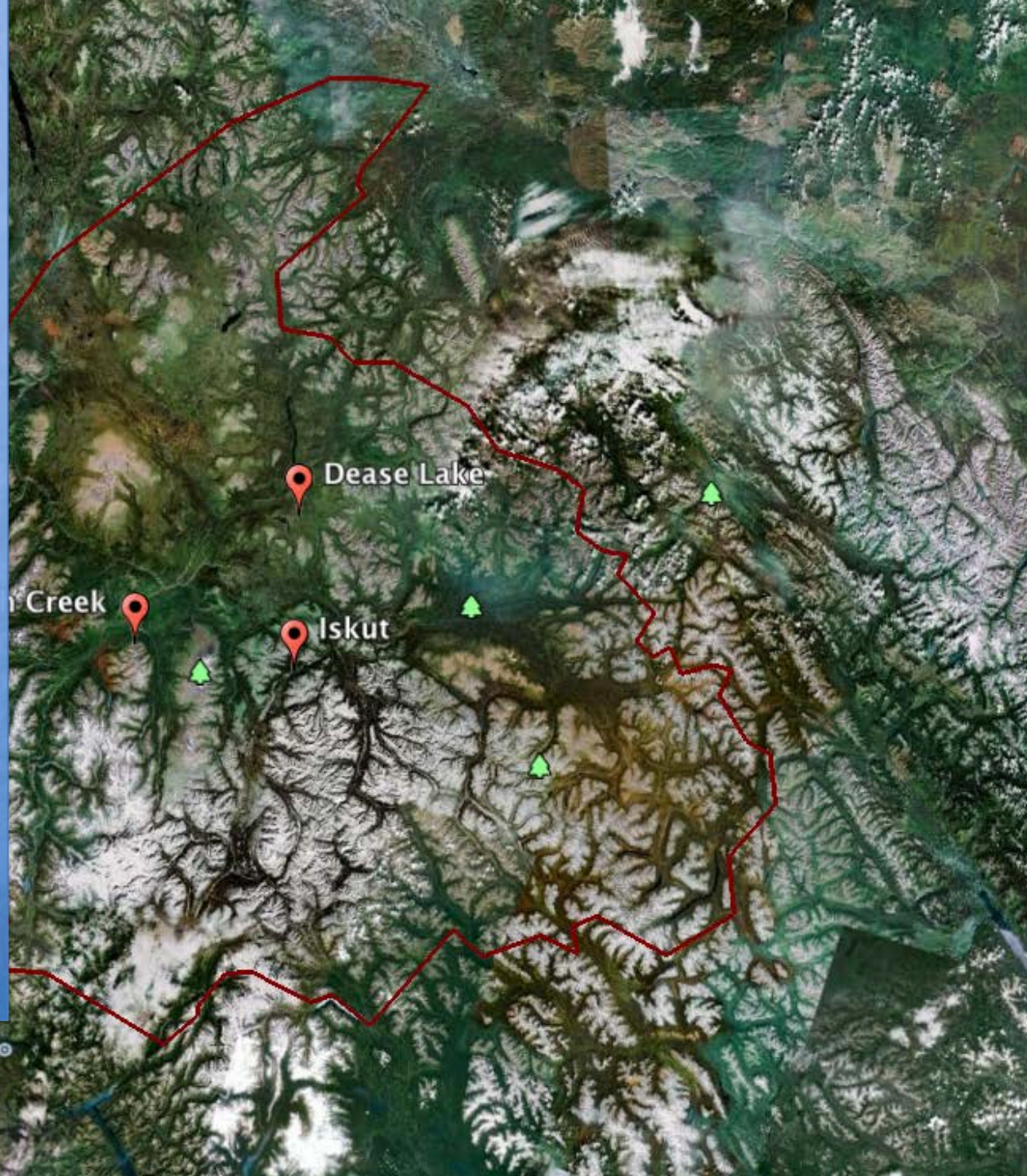
# Presentation Focus

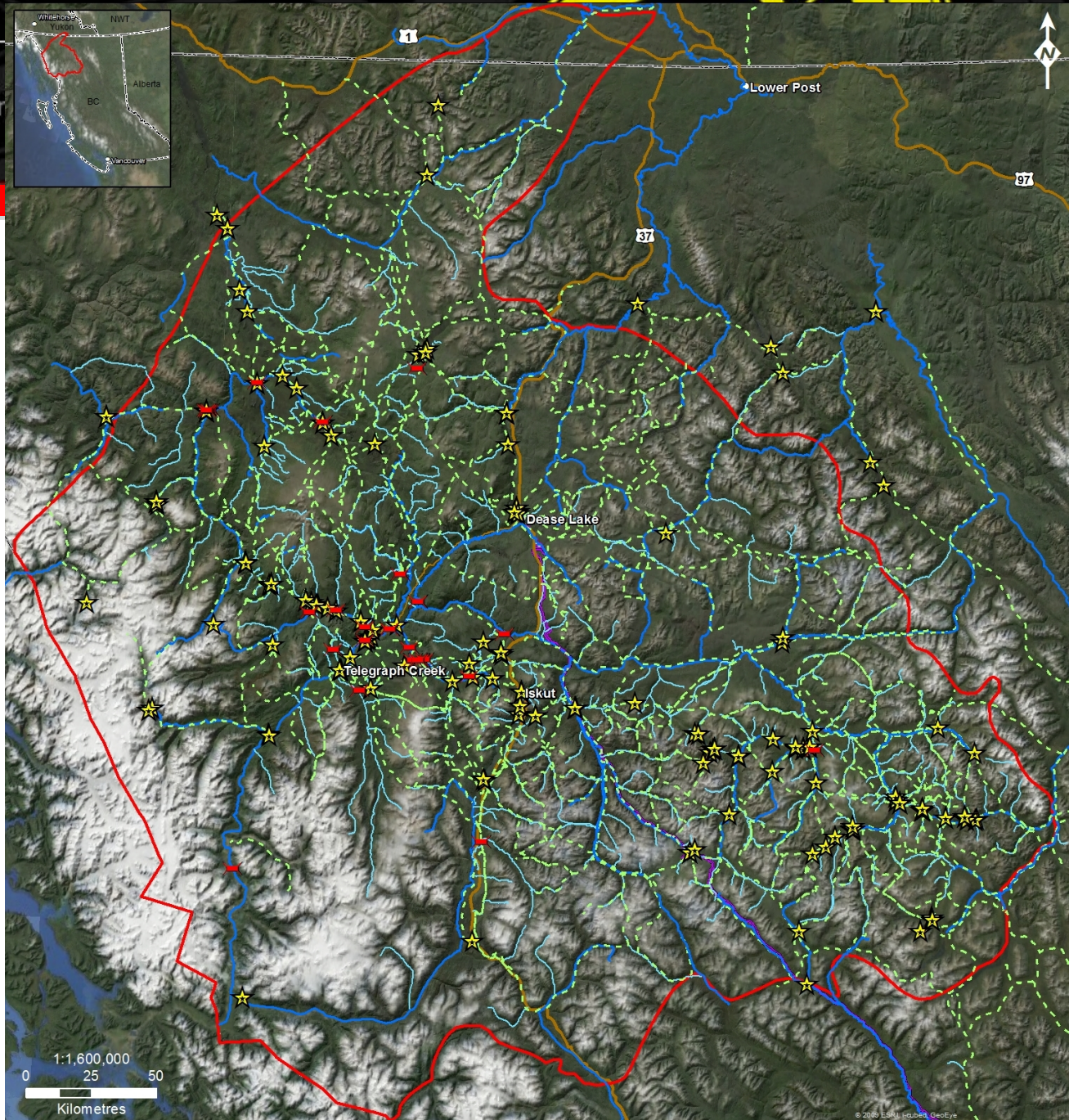
- Create awareness regarding Tahltan values and how Tahltan work towards principles to be considered and applied that will ensure these values are identified and protected,
- Identify opportunities to create certainty in decision making and planning processes that support Tahltan knowledge and the Tahltan “way of life”

# Presentation Overview

- Tahltan Nation
  - Values
  - Water
- Mining
  - Mining History
  - Mining Plan
- Projects
- THREAT
- Principles

- 5,000 registered Tahltan members
- 93,500 sq km (approx. 11.4% of BC)
- Three communities:
  - Dease Lake
  - Telegraph Creek
  - Iskut
- Members across BC, in Whitehorse, Alberta, U.S.







# Values







## Mining History

- Obsidian Mining – Mount Edziza
- 1861 – 1862 Stikine River Gold Rush
- 1863: Gold Mining and “Buck’s Bar”
- 1869 Dease Lake Gold Rush
- 1987: Resource development policy ratified for Tahltan Nation
- 1987: Golden Bear Mine
- 1991: Snip Mine
- 1995: Eskay Creek Mine



# Golden Bear Mine



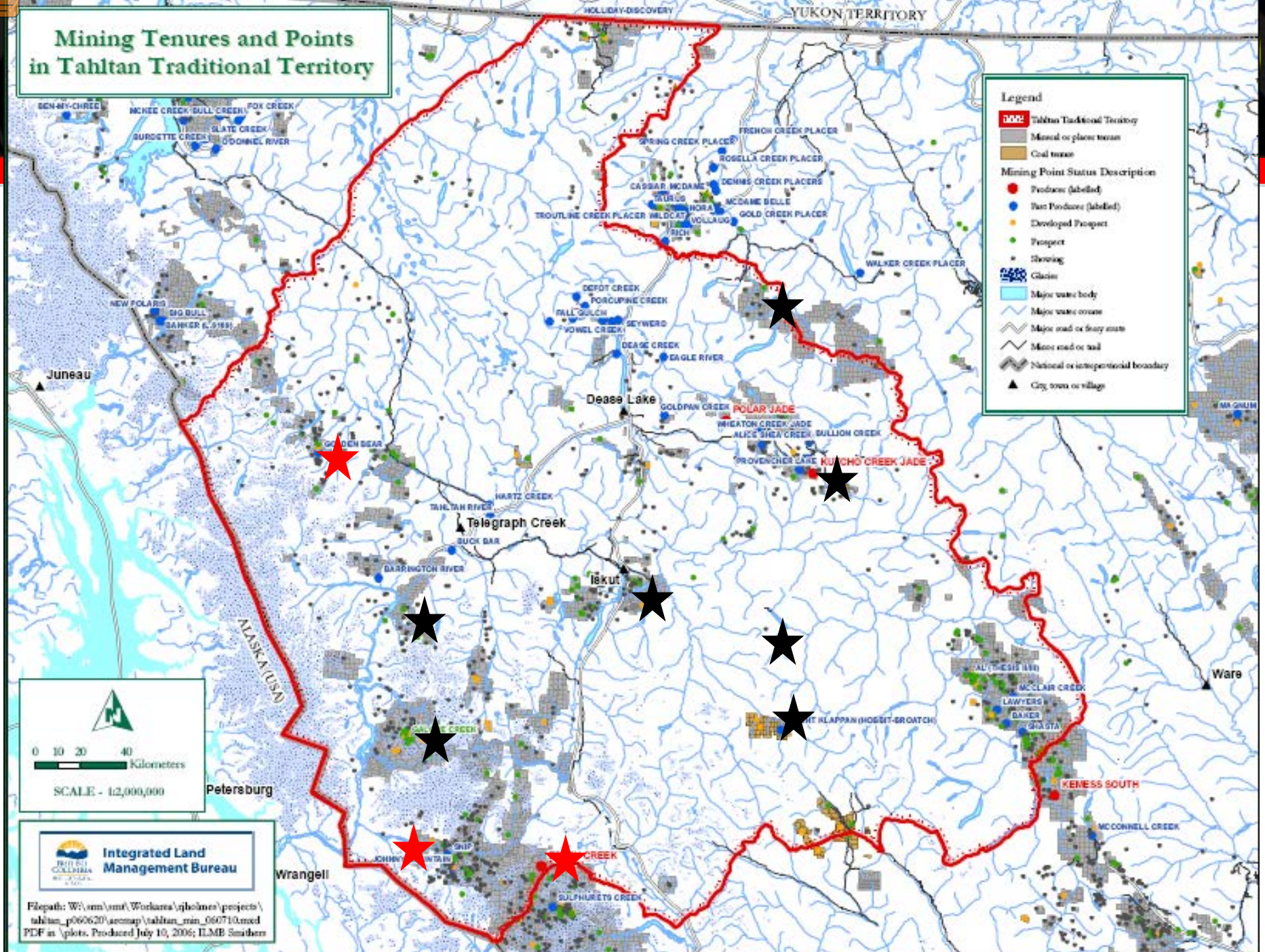
# Eskay Creek Mine



## Tahltan Mining Plan

- Examine and explain a project's economic and legal aspects to the community.
- **Fully assess the projects risks and benefits.**
- **Organize and budget for actions to mitigate risks.**
- Determine through community consultation how project fits within Tahltan vision.
- Develop arrangements and institutions to assure that the project benefits all Tahltans.
- Develop a negotiations strategy.
- Develop formalized negotiation agreements.

# Mining Tenures and Points in Tahltan Traditional Territory



Filepath: W:\sm\sm\Workarea\gholmes\projects\tahltan\_p060620\acemap\tahltan\_min\_060710.mxd  
PDF in \plots. Produced July 10, 2006; ILMB Smithers

# Projects

- Advanced Mining Projects:
  - Red Chris Mine (EA certificate 2005, permitting 2010/11, construction 2012)
  - Kutcho Creek
  - Schaft Creek
  - Kerr Sulphurets Mitchell Project (EA application 2013)
  - Galore Creek
- Northwest Transmission Line (EA certificate 2011)
- Independent Power Producer Projects:
  - Forrest Kerr
  - McLymont
  - Volcano



Tahltan Heritage Resources Environmental  
Assessment Team



## The members of the Tahltan Central Council acknowledge the role of THREAT is:

- to support the protection of Tahltan environmental, social, cultural, heritage and economic interests that may be affected by industrial action
- to assess potential impacts from new and existing industrial development on Tahltan territory,
- to identify options for avoiding or mitigating impacts and
- to ensure that Tahltan people are meaningfully involved in permitting processes and project reviews.
  
- THREAT is comprised of a team of community and technical experts and reports to the Tahltan Nation through the Tahltan Central Council (TCC).





## Government

Referrals

Projects

Working groups

Shared decision making

## Industry

Environmental Assessments

Project planning

Environmental baseline reviews

Socio-cultural impact studies

Environmental Performance Committees

IBA negotiations - environment

## TCC

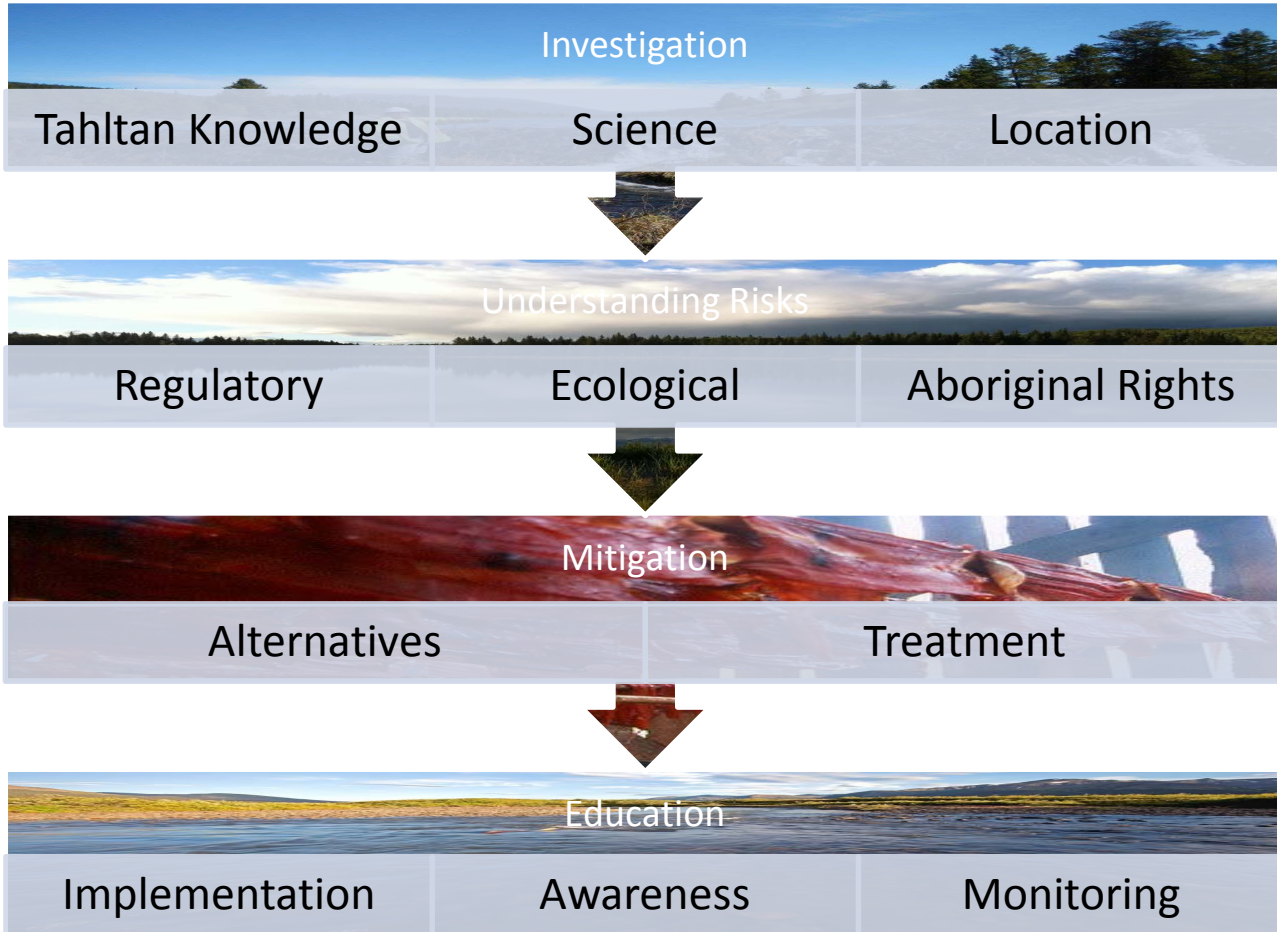
Policy development

Community relations

Best Management practices

Studies

Tahltan Nation Development Planning



***“The survival of our land and water is at stake because of decisions being taken elsewhere. We need our knowledge to guide us as to how to save the planet for our children and grandchildren.”***



**Thank you!**

**Questions?**