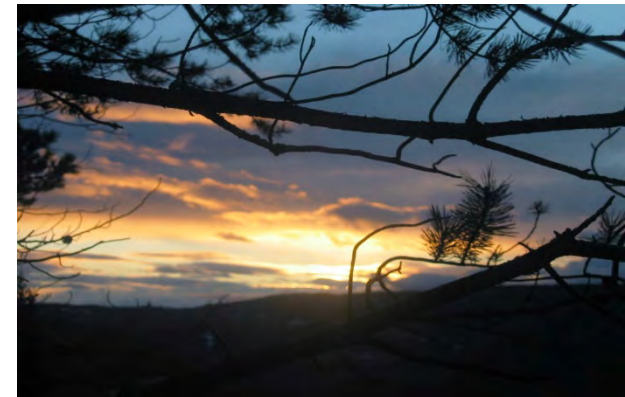
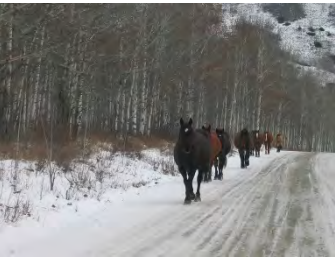


Indigenous Relationships – Case Studies in Natural Resource Management





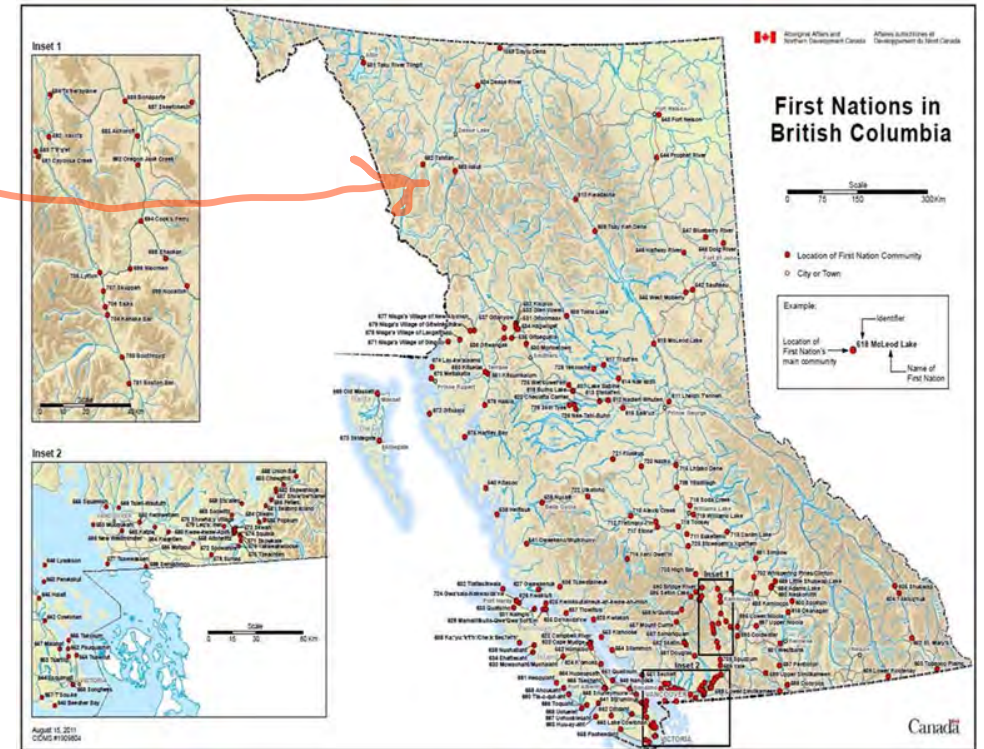
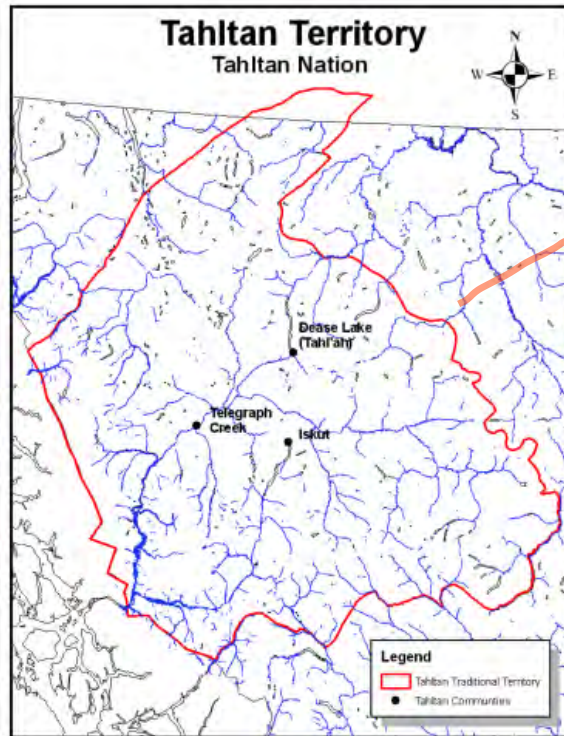
Overview

- Tahltan Peoples and Resource Development
 - Red Chris Mine
- Citxw Nlaka'pamux Assembly and Highland Valley Copper
 - Traditional Plant Study
 - Returning Land Use Objectives

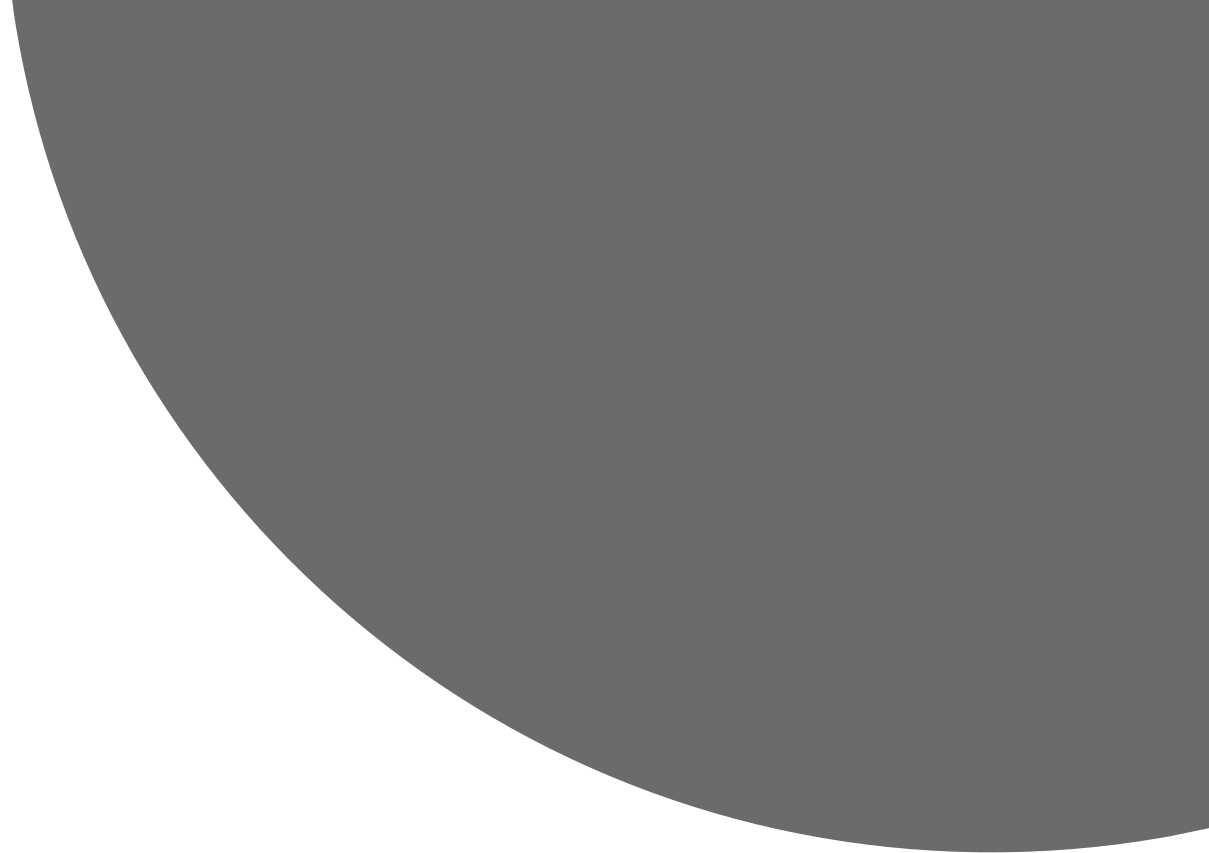
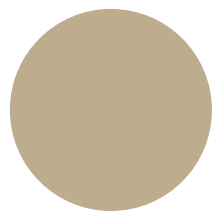
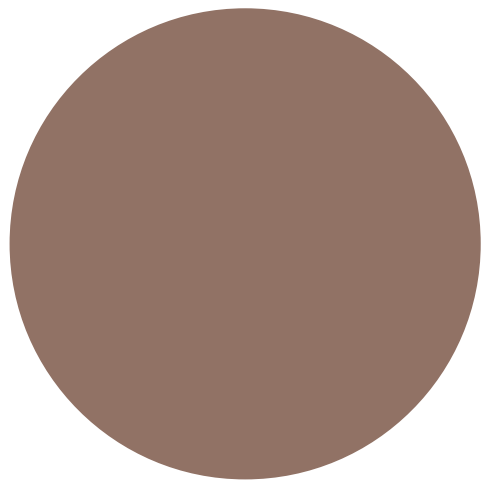
Who Am I?

- Tahltan
- Mother with 1 Daughter
- Engineering Background
- Worked at Mines in Canada
- Worked with Indigenous Peoples, Government (Provincial, Federal)
- Awards (Women in Mining)



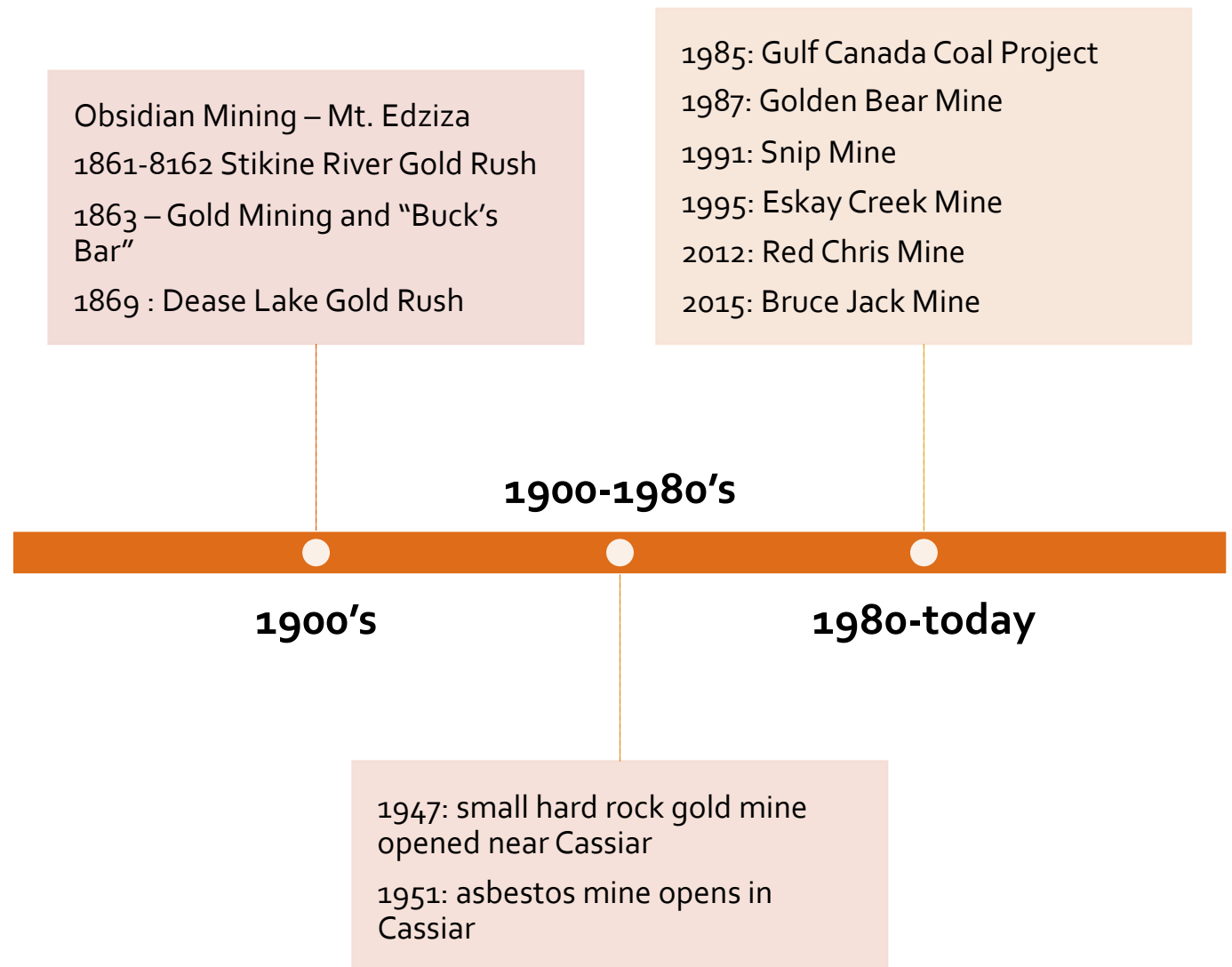


Tahltan Nation



Tahltan Nation and Mining

Tahltan Mining Experience



Tahltan Mine Strategy

- To examine and explain a project's economic and legal aspects to the community
- To fully assess the projects risks and benefits
- To organize and budget for actions to mitigate risks
- To determine through community consultation how project fits within Tahltan vision
- To develop arrangements and institutions to assure that the project benefits all Tahltans
- To develop a negotiations strategy
- To develop formalized negotiation agreements.





Tahltan Economic Development Corporation

- TNDC established in 1985
- Economic foundation for the Tahltan Nation
- Provides sustainable and responsible economic, employment and business development opportunities in Tahltan territory



Red Chris Mine

Independent Engineering Review Board

- A third party review of the Red Chris Tailings impoundment was completed in early 2015. A recommendation from this report was an independent engineering review board (IERB)
- The IERB met on site in 2015/2016.
- A Tahltan representative reports to the board.
- Tahltan have identified and supported one member of the technical review board.



CNA and Highland Valley Copper

Dust Distribution & Traditional Plant Study

Two Overarching Objectives:

1. Dust Mapping Study - Gain increased understanding of mining activities and effects of dust
2. Traditional Plant Study - Work with communities to develop and implement a study of the potential for effects of mine dust on key traditional plants

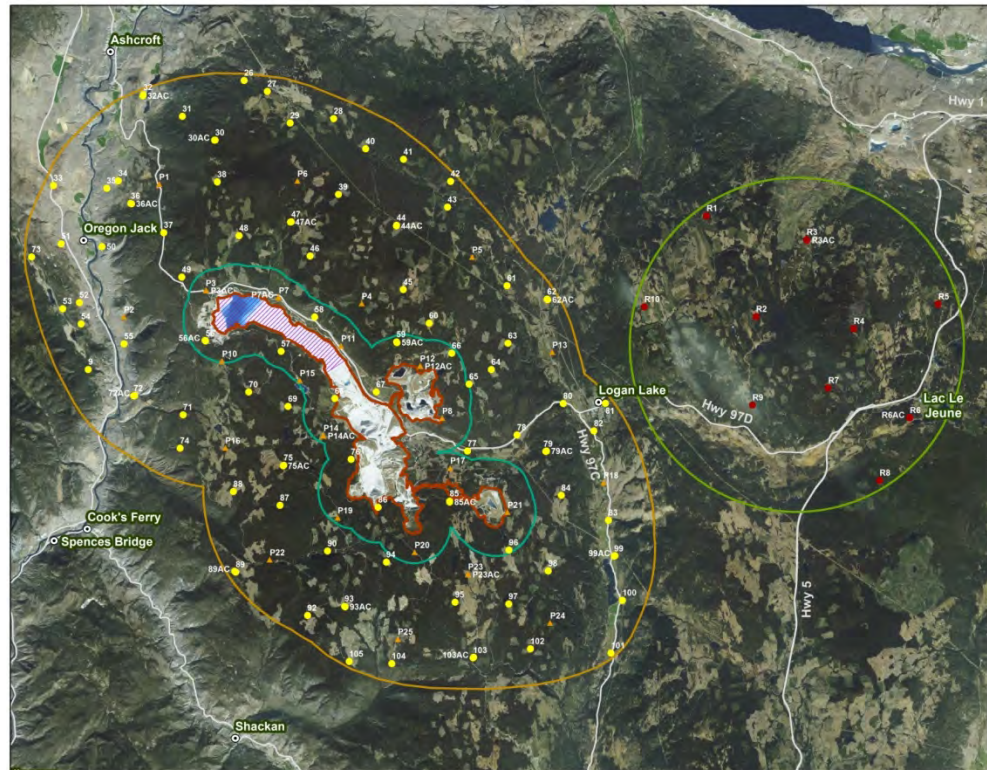


Community Participation

- Nlaka'pamux community members worked with HVC to design and implement the study
- Bands selected community members to participate in study – included elders, adult, some youth
- Workshops were held over two years to design the study
 - Development of research objectives
 - Study design
 - Study and reference area
 - Methods
 - Interpretation of results
 - Presentation of results
- Participation in sampling - Interns



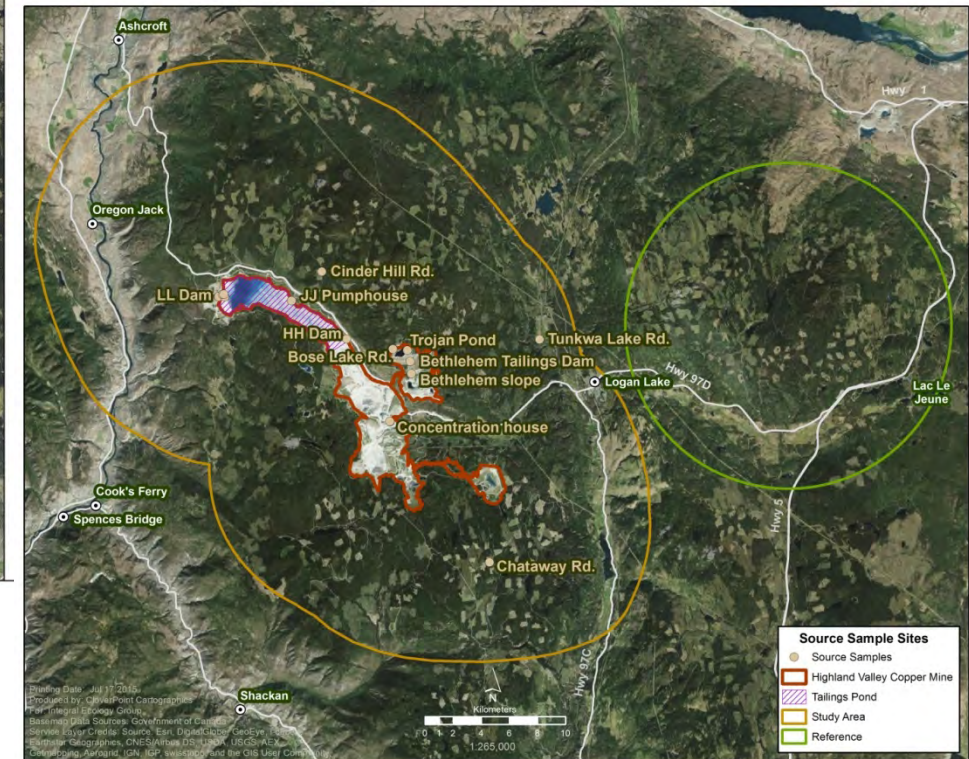
Dust Distribution Study



**Highland Valley
Copper Dust Study
Sample Sites**

Legend

- 2013 Sample Sites
- 2013 Reference Sites



Traditional Plant Study – Community Engagement

- Plant to study
- Ways to harvest
- Where it is found growing
- Where and when it would be harvested
- What parts of the plants were harvested
- How to respectfully harvest according to traditional practices
- Concerns they have with the plant that may be related to dust
- How it is processed
- If it is washed prior to processing



Returning Land Use Plan



Returning Land Use Plan

- I. Recognition of Indigenous lands
- II. Meaningful collaboration
- III. Technically sound
- IV. Living document



I. Recognition of Indigenous Lands

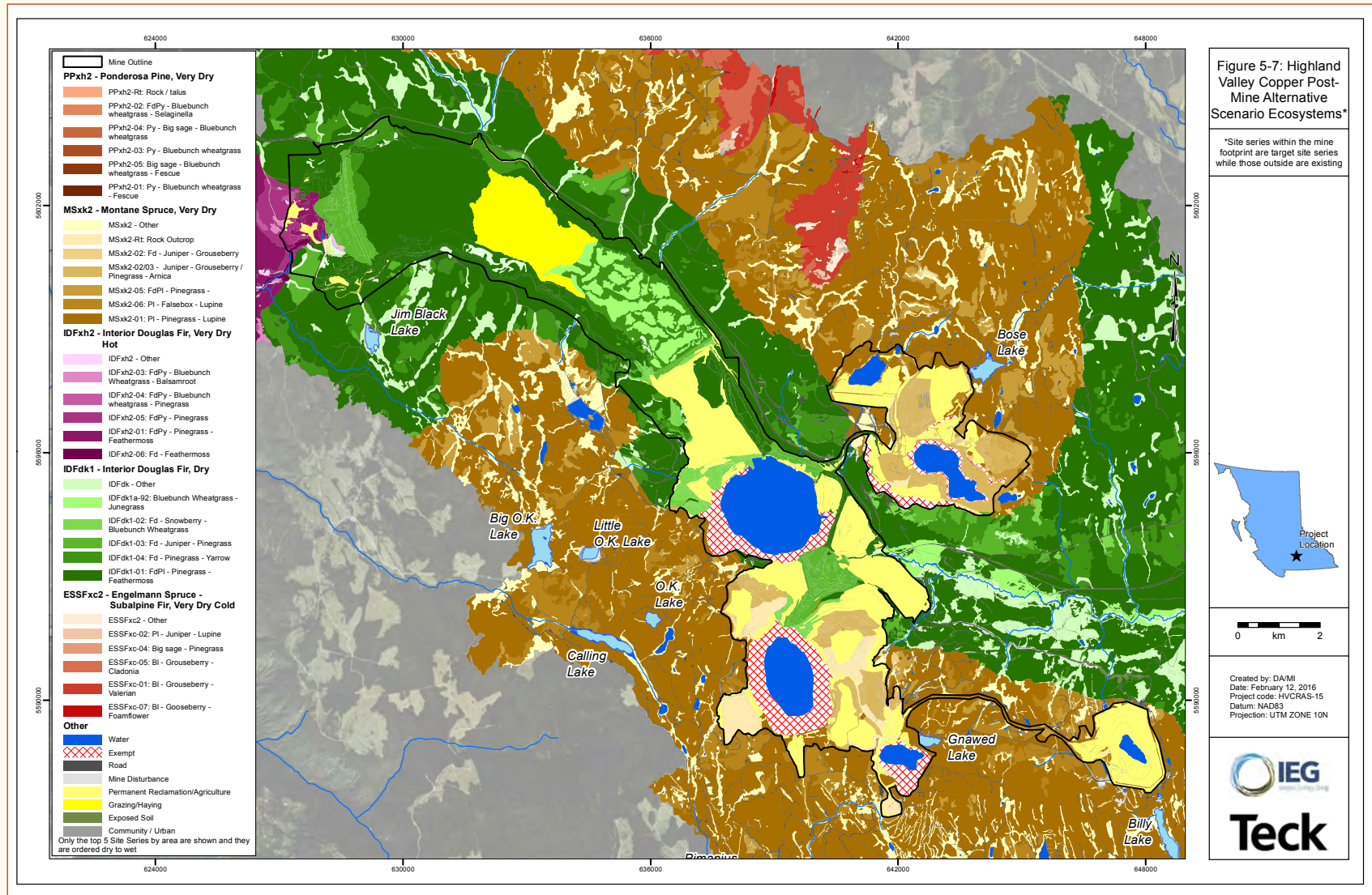


Commitment

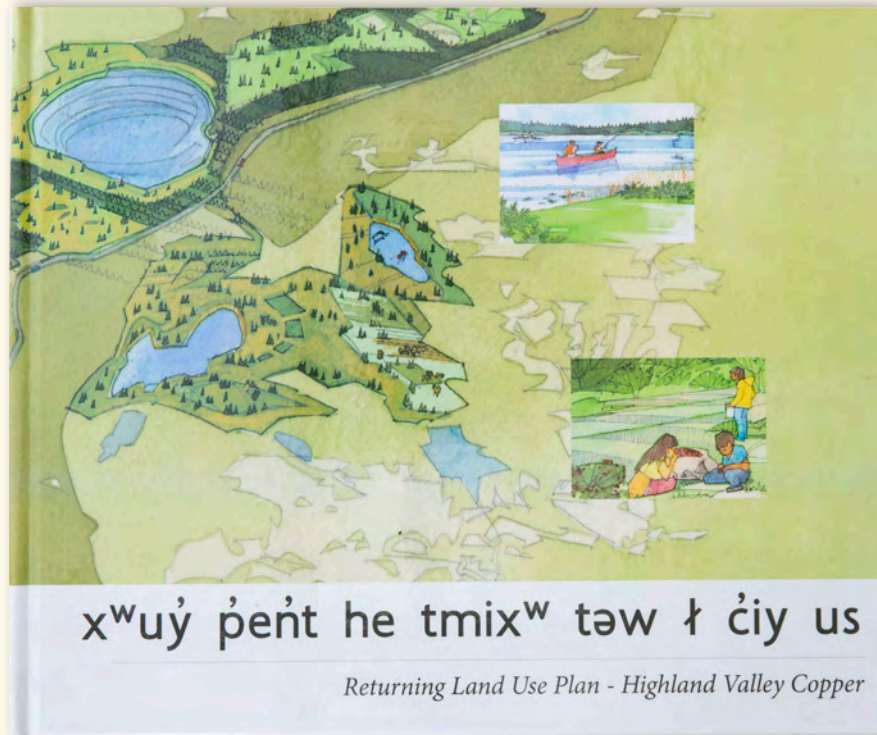
- 16 meetings in one year
- 14 Nlaka'pamux communities



Technical Report



Photobook



x^wu^y p^ent he t^mix^w t^aw ɫ ɕi^y us

Returning Land Use Plan - Highland Valley Copper



WILDLIFE MONITORING

An ungulate health study began in 2013 to determine the influence of mine activities on the health of moose and deer.

The study is still ongoing and will be expanded based on recommendations by the expanded based on recommendations by the Nlaka'pamux Technical Working Groups to include the following three additional focuses:

Additional species - Monitoring the health of additional wildlife species that are culturally significant, year-round residents and common in the HVC area.

Impacts of water consumption - Determining potential impacts to animals who consume water on the mine property.

Human health impacts - Assessing possible human health impacts from consuming wildlife whose range overlaps the mine.

Image: Moose from neighbouring forest area.



ArrowBlade Consulting Services

Tools to Consider

- Early Engagement with Leadership & Community.
 - Established Relationship of Joint Cooperation and Mutual Respect.
 - Provided Resources and Funds for Effective Participation to Enhance the Project.
 - Encouraged & supported capacity development.
 - Work constructively to address concerns prior to submission of a permit application.
- Special Assembly
 - Shared Planning of Infrastructure
 - Business Development opportunities
 - Natural Resources Advisory Committees
 - Applications developed in collaboration with Indigenous representatives.