



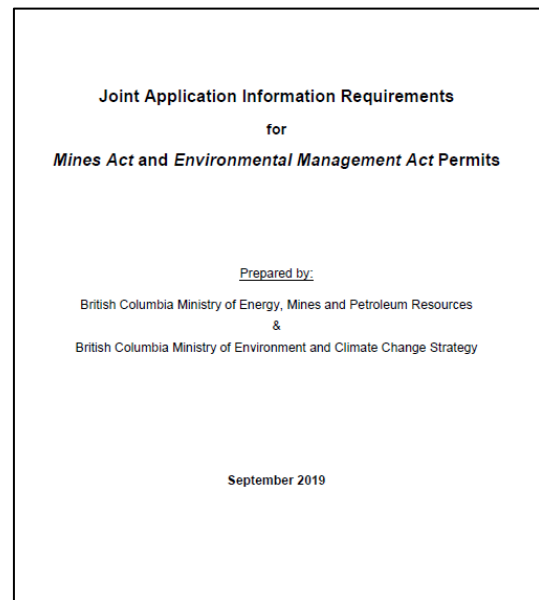
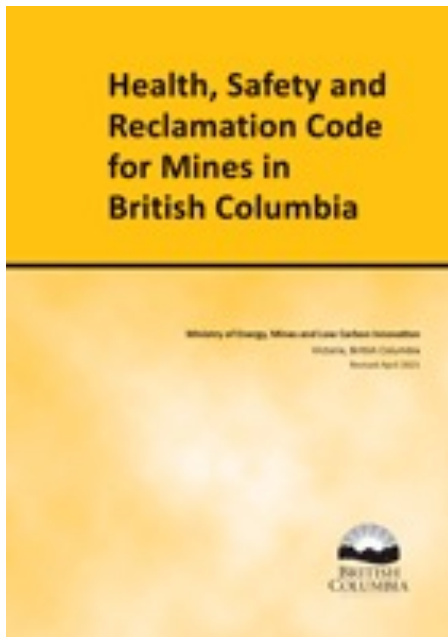
# Policy Foreshadowing: What is EMLI Thinking?

2022 BC MEND ML/ARD Workshop  
Vancouver, BC

Kelsey Norlund, PhD, PGeo  
Manager, Environmental Geoscience  
Major Mines Office, EMLI

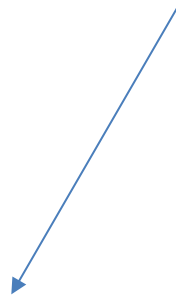


- What is EMLI Geoscience thinking?





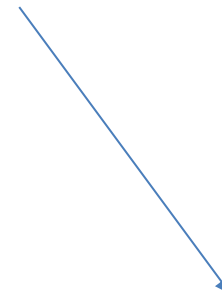
- What is EMLI Geoscience Thinking in terms of...?



Geochemical  
Characterization / ML-  
ARD Management



Water Management



Water Quality Mitigation







- **Mine Water Management**

- **EAO** ensures projects are designed, built, and operated to avoid or mitigate significant adverse effects to the environment, heritage, health, social, and economic values, and Indigenous rights and interests (***Environmental Assessment Act***)
- **EMLI** is responsible for activities on the mine site, including water quality mitigations, focusing on mine design, operation, and worker health and safety (***Mines Act***)
- **ENV** is responsible for regulating the quantity and quality of any discharge to the environment that may leave the mine site (***Environmental Management Act***)

## Coordinated Regulatory Oversight of Major Mines in British Columbia

EAO

EMLI

EAO

EMLI

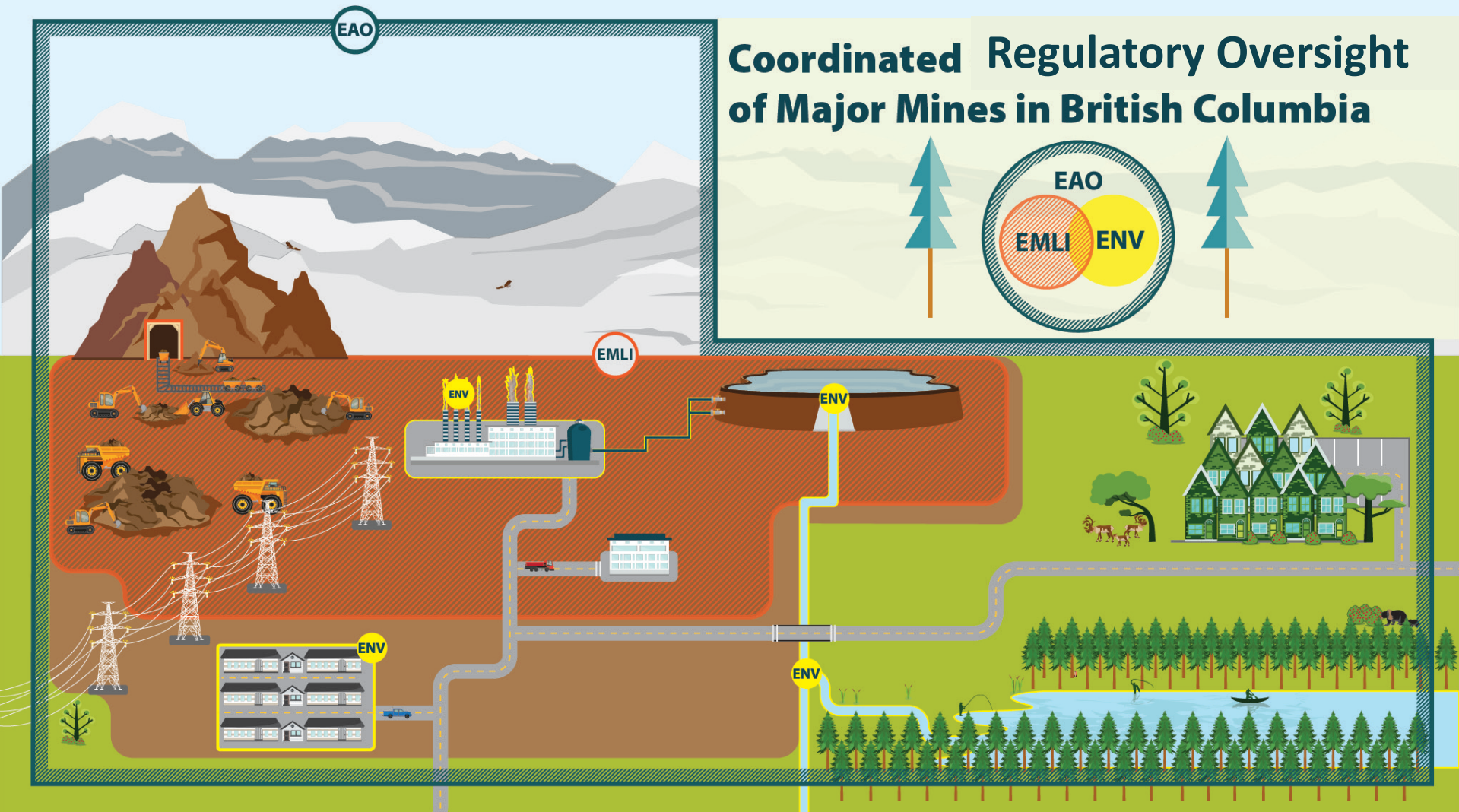
ENV

ENV

ENV

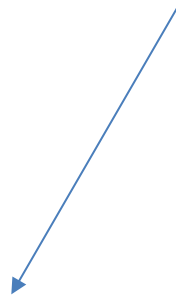
ENV

ENV





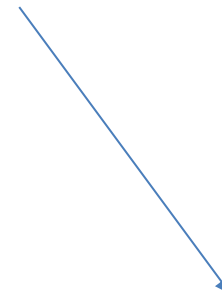
- What is EMLI Geoscience Thinking in terms of...?



Geochemical  
Characterization / ML-  
ARD Management



Water Management



Water Quality Mitigation







**POLICY FOR  
METAL LEACHING  
AND ACID ROCK DRAINAGE  
AT MINESITES IN BRITISH COLUMBIA**

July 1998

Issued by

Ministry of Energy and Mines  
and  
Ministry of Environment, Lands and Parks



**GUIDELINES FOR METAL LEACHING  
AND ACID ROCK DRAINAGE  
AT MINESITES IN BRITISH COLUMBIA**

William A. Price and John C. Errington

MINISTRY OF ENERGY AND MINES

August 1998





**POLICY FOR  
METAL LEACHING  
AND ACID ROCK DRAINAGE  
AT MINESITES IN BRITISH COLUMBIA**

**2022**

Issued by

Ministry of Energy,  
Mines and Low Carbon  
Innovation



**GUIDELINES FOR METAL LEACHING  
AND ACID ROCK DRAINAGE  
AT MINESITES IN BRITISH COLUMBIA**

Ministry of Energy, Mines  
and Low Carbon  
Innovation

**2022**







- Professional reliance



**OSPG**

Office of the Superintendent  
of Professional Governance

---



ENGINEERS &  
GEOSCIENTISTS  
BRITISH COLUMBIA



**POLICY FOR**  
**METAL LEACHING**  
**AND ACID ROCK DRAINAGE**  
**AT MINESITES IN BRITISH COLUMBIA**  
**2023**

Issued by

Ministry of Energy,  
Mines and Low Carbon  
Innovation



GUIDELINES FOR METAL LEACHING  
AND ACID ROCK DRAINAGE  
AT MINESITES IN BRITISH COLUMBIA

William A. Price and John C. Errington  
MINISTRY OF ENERGY AND MINES  
August 1998



Prediction Manual for  
Drainage Chemistry  
from Sulphidic Geologic  
Materials  
MEND Report 1.20.1

This work was done on behalf of MEND and sponsored by:  
The Mining Association of Canada (MAC)  
Natural Resources Canada (NRCan)  
British Columbia Ministry of Energy, Mines and Petroleum Resources/  
British Columbia Technical Research Committee on Reclamation  
International Network for Acid Prevention (INAP)  
Ontario Ministry of Northern Development, Mines and Forestry and  
Yukon Mining and Petroleum Environment Research Group

December 2009



Science and  
experience  
from the last  
10+ years

Expert  
committee  
input and a lot  
of hard work





**GUIDELINES FOR METAL LEACHING  
AND ACID ROCK DRAINAGE  
AT MINESITES IN BRITISH COLUMBIA**

Ministry of Energy, Mines  
and Low Carbon  
Innovation

202X



Practice Advisory

Professional Practice Guideline



- Thank you. I look forward to the discussion.



Kelsey Norlund, Ph.D., P.Geo.  
**Manager, Environmental Geoscience, Major Mines Office**  
Ministry of Energy, Mines and Low Carbon Innovation  
[kelsey.norlund@gov.bc.ca](mailto:kelsey.norlund@gov.bc.ca)